

TIMELESS NORWEGIAN CRAFT



Since 1853

PRODUCT CATALOGUE
2022



CONTENTS

JØTUL F 100 ECO.2 - NEW	6
JØTUL F 200 - SERIES - NEW	7
JØTUL F 105 AND JØTUL F 305 - SERIES	8
JØTUL F 130 - SERIES	10
JØTUL F 160-SERIES	12
JØTUL F 230 - SERIES	11
JØTUL F 360 V2 ADVANCE	14
JØTUL F 370 V2 ADVANCE	18
JØTUL F 480	22
JØTUL F 520 / JØTUL F 520 HIGH TOP	23
JØTUL F 602 ECO	24
JØTUL F 400 ECO	25
JØTUL F 500 ECO	25
JØTUL INSERTS AND CASSETTES	26
JØTUL GAS	32
JØTUL TIPS	36
JØTUL TECHNICAL DIMENSIONS	42



Facebook.com/jotul



@JotulStoves, #jotul



Pinterest.com/jotul



Linkedin.com/company/jotul-as



YouTube.com/JotulAS

Follow us in social media

jotul.co.uk



“HYGGE”

Whether it's the crackling sound of wood burning or the warm light that fills the room with a flickering glow.

The fireplace becomes a natural centerpiece to gather around, and to enjoy a break from everyday life with the people we care for most.





FIGHTING THE COLD SINCE 1853

Jøtul's wood stoves, fireplaces and inserts are handcrafted in cast iron in Norway. Based on a proud tradition, for more than almost 170 years we have combined solid and beautiful craftsmanship with the art of fighting the cold. For this reason, we are the market leader and the preferred choice for customers worldwide.

Cast iron – superior quality

The choice of cast iron in our products is based solely on the extreme quality and durability of the material. We cast all of our furnace parts in sand moulds, therefore in some cases the look of the surface may vary slightly and small pores in the iron may occur. Cast iron is a form stable material and does not bend like steel sheets do. Jøtul's wood stoves hold their shape. Doors, hinges and closing mechanisms remain reliable even after prolonged use.

Market leader since 1853 in Norway

Norway is world renowned for their attitude to sustainability and the environment. They have the strictest emission requirements in the world. That's why Jøtul has perfected the fuel utilisation and optimised the heat effect on our products, this in turn is good news for your wallet and for the environment.

Award-winning, timeless design

Jøtul's products represent a functional and modern design. Innovative but at the same time resistant to short-term trends. At Jøtul, we are convinced that form should follow function, and that good design is more than what immediately meets the eye. As proof of this, several of our products have received recognised design awards.



ENVIRONMENTALLY AWARE WITH CLEAN BURN TECHNOLOGY

Thanks to a continuous focus on research, development and testing, Jøtul is now a world-leader within Clean burn Technology. But why is it so important to be 'best in class' regarding clean burn wood stoves, fireplaces and fireplace inserts? Well, first and foremost, it is a question of improving the climate, by reducing airborne dust to a minimum. This is followed by saving consumers money, because Clean burn Technology gives you more heat per log.

The Norwegian authorities require today's stoves to emit no more than 10 grams of particulate matter for every kilogram of wood that is burnt - and therefore have one of the world's strictest regulations linked to particulate emissions.

However we have much higher climate ambitions than this, and we have therefore developed technology which results in emissions of less than half of the statutory requirement. Some models can even boast emissions as low as 1.9 grams, a level which no other manufacturer can match.

When wood is heated, gases and particulates are released. Old stoves release these gas and particulates straight up the pipe together with the heat, resulting in an efficiency of just 40 percent. The principle of clean burn stoves is that they are better insulated, which increases the temperature in the burn chamber.

In addition, extra heated air (oxygen) is fed in just above the fire, which ensures that what would have been unburned gases and particulates in an old stove undergo combustion again. This results in lower emissions through the pipe, doubles the efficiency and releases more heat into the room. It is these processes that we are constantly striving to improve in our research and development, in order to get closer to the optimal burn process.

Take responsibility for the climate

Broad agreement amongst experts and environmental organizations While wood-firing is undoubtedly a major contributory factor behind the challenges relating to airborne dust, there is broad agreement amongst both experts and environmental organizations in Norway that the solution lies in replacing old stoves with new, clean burn wood stoves and fireplace stoves, or installing closed fireplace inserts



in open fireplaces. It is not wood-firing in itself which lies behind the pollution; it is the use of old stoves and fireplaces which result in incomplete combustion. Replacing old fireplaces with new ones will resolve the pollution problems caused by wood-firing.

Good environmental and financial sense

Environmental awareness makes good financial sense too It is vital to use fuel types in stoves and fireplaces which produce minimal emissions of particulates for a healthier climate - and that of course will be the principal motivation for most people to replace their old stove or fireplace. However, environmental awareness also makes good financial sense. Fuel costs will be considerably reduced because less heat disappears up the pipe and more is released into the room.

According to "Energismart", a project run by Friends of the Earth Norway which aims to make it easier to make energy-smart decisions around the home, you will make the following savings with a clean burn stove:

- Where a traditional, non-clean burn stove only manages to utilize 50% of the wood for heat, up to **80% is utilized in a clean burn stove.**
- A 40-liter bag of birchwood will theoretically produce 76 kWh. However, when burned in an old stove, it will release 39 kWh of heat into the home. **In a clean burn stove, it will give off 60 kWh of heat into the home.**
- This means that if you buy a fathom of wood (equivalent to 54 forty-litre sacks), you will produce 3,240 kWh in a clean burn wood stove. In an old stove, you will only produce 2,106 kWh and you will need another 29 sacks.

In other words, with our Clean burn Technology, you are contributing to both a cleaner environment and saving on your fuel bills, enabling you to enjoy the cosy warmth to the full.

COMPACT CLASSIC WITH NEW TECHNOLOGY

Warm, classic design and heating technology from the top shelf - these have been Jøtul's core values for more than almost 170 years. And now we have once again fine-tuned one of our most beloved models with state-of-the-art combustion technology, built for the environmental requirements of the future.



EFFICIENCY: 80 %

ECOLABEL: **A+**

LOG SIZE: 35 CM

EFFECT NOMINAL: 4.9 KW



JØTUL F 100 ECO.2 SL / LL

Jøtul F 100 ECO.2 is characterized by a Norwegian traditional pattern, which frames the flames in a horizontal glass door with good visibility. The stove is compact and fits most heating needs well. The stove has a smart internal ash solution that makes removing the ashes an easy job, without ash spills.

Available in short (SL) or long leg (LL) options to suit hearth requirements.

ACCESSORIES:

Extra heat shield rear

COLOURS:

JØTUL F 100 Tracery:

● BLACK PAINT

JØTUL F 100 Plain door:

● BLACK PAINT (SE)

● BLUE BLACK ENAMEL (SE)

○ IVORY ENAMEL (SE)

89 kg

WEIGHT APPROX.:

DIMENSIONS
Basic model, HxWxD:

LL model: 658* x 528 x 445 mm

SL model: 598* x 528 x 445 mm

* incl. smoke outlet



Wooden handle in line with Jøtul's classic design.

REINVENTING A CLASSIC

Based on the exterior of one of Jøtul's best-selling classics, Jøtul F 200-series has brought a piece of the heritage and almost 170 years of experience with heat, and given it a modern interpretation.

You can easily control the air flow with just one lever and emptying of ash is made simple with an easily accessible ash solution at the bottom of the combustion chamber.

EFFICIENCY: 82 %

ECOLABEL: **A+**

LOG SIZE: 37 CM

EFFECT NOMINAL: 5 KW



JØTUL F 200

The organic shapes are delicately stylised, with a beautifully curved top, Gothic-inspired railings that frame the fire and four solid legs that complete the impression.

ACCESSORIES:

Short legs, External air kit 80 mm, cover for external air, floorplate in steel or glass



COLOURS:

● **BLACK PAINT**

WEIGHT APPROX.:

138 KG

DIMENSIONS

BASIC MODEL,

HxWxD: **755x561x472 mm**

SHORT LEGS,

HxWxD: **705x561x472 mm**

The stove is available with short legs an optional accessory

JØTUL F 205

It may look small at first glance, but the Jøtul F 205 is designed to perform optimally at low power, while being robust enough to handle the cold peaks.

ACCESSORIES:

Short legs, External air kit 80 mm, cover for external air, floorplate in steel or glass



COLOURS:

● **BLACK PAINT**

WEIGHT APPROX.:

138 KG

DIMENSIONS

BASIC MODEL,

HxWxD: **755x521x472 mm**

SHORT LEGS,

HxWxD: **705x521x472 mm**

The stove is available with short legs an optional accessory

WOOD STOVES WITH CHARACTER

Jøtul F 105 and F 305 combines almost 170 years of experience in making functional wood stoves with top notch design. The stoves have an unmatched view to the fire and their large burn chambers make it easy to position logs and kindling. They combine radiated and convected heat, making it easy to position and ensure a pleasant room temperature. An ash lip and soapstone top can be fitted as an optional accessory on some of the models.

EFFICIENCY: 83 %

ECOLABEL: **A+**

LOG SIZE: 33 CM

EFFECT NOMINAL: 4.5 KW



JØTUL F 105 SL / LL

The Jøtul F 105 series has a confident and friendly appearance. In spite of its size the Jøtul F 105 is a wood stove that stands out from the rest. Some of the distinctive design elements of this wood stove include the large horizontal glass door, which offers a great view to the fire and the intuitive air controls that make it very user friendly. Standing on legs it has a light appearance, perfect for smaller rooms.

ACCESSORIES:

Floor plate in steel or glass, soapstone top, ash lip, handle for ashpan, external air kit, heat shield and short legs.

COLOURS:

● BLACK PAINT

○ WHITE ENAMEL

WEIGHT APPROX.: 97 kg (LL) / 94 kg (SL)

DIMENSIONS 690 x 410 x 325 mm (LL)

HxWxD: 550 x 410 x 325 mm (SL)



JØTUL F 105 B

The Jøtul F 105 is also available on a closed base version which follows the shape of the stove down to the floor. The unbroken lines and smooth surface of the cast iron gives the clean design. Jøtul F 105 is designed to perform optimally at low heat output, while being robust enough to fend off cold snaps.

ACCESSORIES:

Floor plate in steel or glass, handle for ashpan, soapstone top, external air kit, heat shield.



COLOURS:

● BLACK PAINT

WEIGHT APPROX.: 107 kg

DIMENSIONS 690 x 410 x 325 mm

Basic model, HxWxD:



EFFICIENCY: 79 %

ECOLABEL: **A**

LOG SIZE: 41 CM

EFFECT NOMINAL: 7 KW



JØTUL F 305 SL / LL

The Jøtul F 305 on legs has a light touch about it, focusing on showcasing the flames and the fire within. The horizontal format of the burn chamber makes it easy to burn large pieces of wood. Intuitive air controls makes it user friendly and the ash solution is easily accessible behind the front door.

ACCESSORIES:

Soapstone top, ash lip, external air kit, heat shield and short legs.



reddot award 2015
winner

DOGA AWARD

COLOURS:

- BLACK PAINT
- WHITE ENAMEL

WEIGHT APPROX.: 137 kg

DIMENSIONS 850 x 560 x 395 mm (LL)

Basic model, HxWxD: 650 x 560 x 395 mm (SL)

JØTUL F 305 B

The Jøtul F 305 sits on a solid base and offers the possibility to store wood below the stove firebox. The large door, which covers the ash solution, offers a great view to the fire.

ACCESSORIES:

Soapstone top, external air kit, heat shield.



reddot award 2015
winner

DOGA AWARD



With side heat shield



With heat shield
and soapstone top

COLOURS:

- BLACK PAINT

WEIGHT APPROX.: 163 kg

DIMENSIONS 850 x 560 x 395 mm

Basic model, HxWxD:

FLEXIBLE INSTALLATION

The Jøtul F 130-series is clean burning with a modern combustion system making it more efficient and reducing wood consumption by up to 40%. Integrated convection allows you to install the stove closer to combustible material. The designers behind this range is the award-winning design company Hareide Design.



EFFICIENCY: 83 %

ECOLABEL: **A+**

LOG SIZE: 25 cm

EFFECT NOMINAL: 4.7 kW



JØTUL F 134 AND JØTUL F 135

Jøtul F 134 sits on a stylish base.

Jøtul F 135 sits on a stylish base with side glass which offers a great view to the fire.

ACCESSORIES:

Glass or steel floor plate and external air kit 100 mm.



COLOURS:

● **BLACK PAINT**

WEIGHT APPROX.:

140 kg

DIMENSIONS

Basic model, HxWxD:

1098 x 410 x 396 mm

JØTUL F 136 AND JØTUL F 137

Jøtul F 136 sits on a stylish pedestal.

Jøtul F 137 sits on a stylish pedestal with side glass which offers a great view to the fire.

ACCESSORIES:

Glass or steel floor plate and external air kit 100 mm.



COLOURS:

● **BLACK PAINT**

WEIGHT APPROX.:

120 kg

DIMENSIONS

Basic model, HxWxD:

1098 x 410 x 396 mm

NEW FIRING TECHNOLOGY

This wood-burning stove has simple, clean lines, which give it a timeless expression. Hareide Design has utilised the design-friendly properties of cast iron and designed a stove with a soft overall impression and great flame view. The cool-to-touch handle is located on the top of the door. Jøtul F 230 series benefits from ground-breaking combustion technology, which allows for easy installation. Integrated supply air through third party concentric flue system makes the Jøtul F 230 ideal for new, modern low energy houses built according to today's stringent requirements.



EFFICIENCY: 80 %

ECOLABEL: **A+**

LOG SIZE: 33 CM

EFFECT NOMINAL: 6 KW



JØTUL F 232

The Jøtul F 232 comes without side glass and has simple, clean lines, which give it a timeless expression.

ACCESSORIES:

Single wall pipe rear outlet kit*

Single wall pipe top outlet kit*

*one of the above required if not using concentric flue pipe.

Concentric flue pipe available, contact dealer for details.

6mm decorative floor plate.



COLOURS:

● **BLACK PAINT**

WEIGHT APPROX.:

129 kg

DIMENSIONS

Basic model, HxWxD:

1012 x 471 x 399 MM

JØTUL F 233

The Jøtul F 233 comes with side glass and has a soft overall impression and great flame view.

ACCESSORIES:

Single wall pipe rear outlet kit*

Single wall pipe top outlet kit*

*one of the above required if not using concentric flue pipe.

Concentric flue pipe available, contact dealer for details.

6mm decorative floor plate.



COLOURS:

● **BLACK PAINT**

WEIGHT APPROX.:

130 kg

DIMENSIONS

Basic model, HxWxD:

1012 x 471 x 399 MM

THE INTERIOR DESIGNERS FAVOURITE

The Jøtul F 160 series consists of four models, with or without side glass and different bases. Parts of this series may be clad in soapstone for decoration and heat retaining properties. With a soapstone top the wood stove keeps more of the heat while the fire is going. It is adapted to modern houses and is suitable for low effect heating.



EFFICIENCY: 82 %

ECOLABEL: **A+**

LOG SIZE: 33 CM

EFFECT NOMINAL: 5 KW



JØTUL F 162

Jøtul F 162 is characterised by its sleek look and three sturdy legs that give the wood stove an easy and modern look.

ACCESSORIES:

Soapstone top, glass or steel floor plate, external air kit and cover for external air, 100 mm short legs.



COLOURS:

● **BLACK PAINT**

WEIGHT APPROX.:

115 kg

DIMENSIONS

Basic model, HxWxD:

903 x 450 x 447 mm



reddot award 2011 winner

JØTUL F 167

The Jøtul F 167 woodstove is characterised by the large sideglass and the elegant placement on top of a pedestal which with time has become an award-winning signature design for Jøtul.

ACCESSORIES:

Soapstone top, glass or steel floor plate and external air kit.



COLOURS:

● **BLACK PAINT**

WEIGHT APPROX.:

140 kg

DIMENSIONS

Basic model, HxWxD:

1033 x 450 x 447 mm

JØTUL F 163

Jøtul F 163 features large side glass and three sturdy legs that give the stove an easy and modern look. Choose between black paint surface or maintenance free white enamel.

ACCESSORIES:

Soapstone top, glass or steel floor plate, external air kit and cover for external air (Black paint only), 100 mm short legs (Black paint only).



COLOURS:

- BLACK PAINT
- WHITE ENAMEL

WEIGHT APPROX.:

115 kg

DIMENSIONS

Basic model, HxWxD:

903 x 450 x 447 mm



reddot award 2011
winner

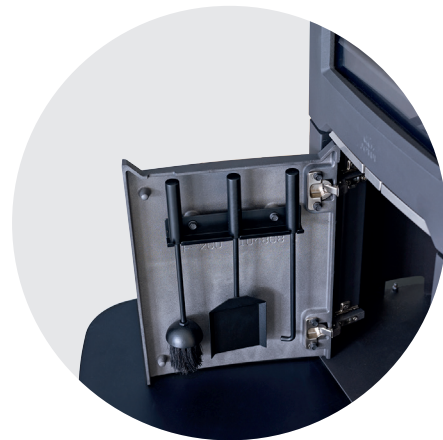
In 2011 Jøtul F 162 and 163 won the RedDot design award. The distinction "Red Dot" has become established internationally as one of the most sought-after seals of quality for good design.

JØTUL F 165

Jøtul F 165 has large side glass and a practical storage space in the base where you can hide accessories. A hidden, custom-made companion set is included.

ACCESSORIES:

Soapstone top, glass or steel floor plate and external air kit.



A practical companion set is inside the door of the base of the Jøtul F 165 model and is easily accessible.

COLOURS:

- BLACK PAINT

WEIGHT APPROX.:

145 kg

DIMENSIONS

Basic model, HxWxD:

1033 x 450 x 447 mm

JØTUL F 360 V2 ADVANCE

MULTIPLE OPTIONS

Our new Jøtul F 360 V2 Advance series consists of five main cast iron models. Each of which can be customised. In the same way as our award-winning Jøtul F 370 V2 Advance series, the new stoves have different base options, and you can add items like rotating plates and high top to achieve the stove you want.

The new, magnetic door lock, ensures that the door opens gently and effortlessly. The integrated “stay function” makes it easier for you to add logs, the door remains open until you apply a little pressure to the handle and closes again by itself. Thanks to the newly developed seals with soft-close effect, the door closes slowly, gently and silently.

EFFICIENCY: 78 %
ECOLABEL: **A**
LOG SIZE: 33 cm
EFFECT NOMINAL: 6 kW





JØTUL F 361 V2 ADVANCE

Jøtul F 361 V2 Advance has a cast iron base with a removable shelf. It has a vertical combustion chamber which provides large and attractive flames.

ACCESSORIES:

Cast iron door for base, top plate in soapstone, external air kit, 6 mm decorative glass and 1 mm steel floor plate.



COLOURS:

● BLACK PAINT

WEIGHT APPROX.: 172 kg

DIMENSIONS
Basic model, HxWxD: 1155 x 443 x 453 mm

JØTUL F 368 V2 ADVANCE

Jøtul F 368 V2 Advance has a closed base with integrated door.

ACCESSORIES:

Top plate in soapstone, 6 mm decorative glass and 1 mm steel floor plate and external air kit.



COLOURS:

● BLACK PAINT

WEIGHT APPROX.: 179 kg

DIMENSIONS
Basic model, HxWxD: 1155 x 443 x 453 mm

JØTUL F 363 V2 ADVANCE

Jøtul F 363 V2 Advance sits on an elegant pillar that can be turned 360°.

ACCESSORIES:

Rotating plate, soapstone top, glass or steel floor plate, and external air kit.



COLOURS:

● BLACK PAINT

WEIGHT APPROX.: 164 kg

DIMENSIONS
Basic model, HxWxD: 1155 x 443 x 453 mm



Jøtul F 360 V2 Advance are triangular with rounded edges.



A vent valve ensures easy and proper firing.

JØTUL F 361 V2 HT ADVANCE

Jøtul F 361 V2 High Top Advance has a top with room for Heat storage*) and a base with a practical removing shelf for storage.

ACCESSORIES:

Cast iron door for base, external air kit, Jøtul Heat Storage System, 6 mm decorative glass and 1 mm steel floor plate.

*) Read more about Jøtul Heat Storage System on page 37.

COLOURS:

● BLACK PAINT

WEIGHT APPROX.: 201 kg

DIMENSIONS 1535 x 443 x 453 mm
Basic model, HxWxD:



JØTUL F 368 V2 HT ADVANCE

Jøtul F 368 V2 High Top Advance has a top with room for Heat Storage*) and a closed base with shelf.

ACCESSORIES:

Jøtul Heat Storage system, cast iron door for base, 6 mm decorative glass and 1 mm steel floor plate and external air kit.

*) Read more about Jøtul Heat Storage System on page 37.

COLOURS:

● BLACK PAINT

WEIGHT APPROX.: 208 kg

DIMENSIONS 1534 x 443 x 453 mm
Basic model, HxWxD:



JØTUL F 370 V2 ADVANCE

DESIGN ICON

The iconic and award-winning Jøtul F 370 V2 Advance series has been further improved and offers you even more functionality. With the new, magnetic door lock, you will experience a gentle and effortless opening of the door.

The integrated “stay function” makes it easier for you to add more logs. The door remains open until you apply a little pressure to the handle and it closes again by itself. Thanks to the newly developed seals with soft close the door closes slowly, gently and silently.



In 2017 the Jøtul F 370 V2 Advance series won the IF Design award for design Excellence in the discipline Product design.

EFFICIENCY: 78 %
ECOLABEL: **A**
LOG SIZE: 33 cm
EFFECT NOMINAL: 6 kW





JØTUL F 371 V2 ADVANCE

The Jøtul F 371 V2 Advance is characterised by a base in a sleek design, clean lines and a practical shelf for storage in its base.

ACCESSORIES:

Cast iron door for base, removable shelf in the base, glass or steel floor plate and external air kit.



COLOURS: ● **BLACK PAINT**
 WEIGHT APPROX.: 164 kg
 DIMENSIONS 1155 x 443 x 453 mm
 Basic model, HxWxD:

JØTUL F 378 V2 ADVANCE

Jøtul F 378 V2 Advance has a clean appearance with a door in cast iron. It sits on base with clean lines all the way to the floor.

ACCESSORIES:

Removable shelf in the base, glass or steel floor plate and external air kit.



COLOURS: ● **BLACK PAINT**
 WEIGHT APPROX.: 171 kg
 DIMENSIONS 1155 x 443 x 453 mm
 Basic model, HxWxD:

JØTUL F 373 V2 ADVANCE

The Jøtul F 373 V2 Advance is characterised by its modern design where the combustion chamber sits on a pedestal. This model is a re-design of the only wood stove in the world to have won the prestigious, international "Red dot design award: best of the best".

ACCESSORIES:

Rotating plate, soapstone top, glass or steel floor plate and external air kit.



Top plate in soapstone can be selected as decor for the Jøtul 370 V2 Advance series.

COLOURS: ● **BLACK PAINT**
 ○ **WHITE ENAMEL**
 WEIGHT APPROX.: 156 kg
 DIMENSIONS 1155 x 443 x 453 mm
 Basic model, HxWxD:



NEW FEATURE



The integrated "stay function" in the door makes it easier for you to add logs without holding the door.

JØTUL F 371 V2 HT ADVANCE

The Jøtul F 371 V2 HT Advance has an open base with a practical storage space and a detachable shelf. This is a tall product where you can integrate hidden, heat accumulating stone*). The wood stove has a sleek and modern design.

ACCESSORIES:

Jøtul Heat Storage system, cast iron door for base, removable shelf in the base, glass or steel floor plate and external air kit.

*) Read more about Jøtul Heat Storage System on page 37.

COLOURS:

● BLACK PAINT

WEIGHT APPROX.: 193 kg

DIMENSIONS 1534 x 443 x 453 mm
Basic model, HxWxD:



JØTUL F 378 V2 HT ADVANCE

Jøtul F 378 V2 HT Advance has an elegant cast iron door placed in front of the base storage which includes a detachable shelf. This is a tall product where you can integrate hidden, heat accumulating stone*). The wood stove has a sleek and modern design.

ACCESSORIES:

Jøtul Heat Storage system, soapstone top, removable shelf in the base, glass or steel floor plate and external air kit.

*) Read more about Jøtul Heat Storage System on page 37.

COLOURS:

● BLACK PAINT

WEIGHT APPROX.: 200 kg

DIMENSIONS 1534 x 443 x 453 mm
Basic model, HxWxD:



JØTUL F 377 V2 ADVANCE

Jøtul F 377 V2 Advance includes elegant and heat-retaining décor from soapstone. It also features a practical storage space in the base with a detachable shelf for increased flexibility.

ACCESSORIES:

Cast iron door for base, glass or steel floor plate and external air kit.

COLOURS:

● BLACK PAINT

WEIGHT APPROX.: 221 kg

DIMENSIONS 1172 x 494 x 489 mm
Basic model, HxWxD:



JØTUL F 377 V2 HT ADVANCE

Jøtul F 377 V2 HT Advance is a tall product made from cast iron and soapstone. It has an elegant and modern design where you can integrate hidden, heat accumulating stone*).

ACCESSORIES:

Jøtul Heat Storage system, cast iron door for base, glass or steel floor plate and external air kit.

*) Read more about Jøtul Heat Storage System on page 37.

COLOURS:

● BLACK PAINT

WEIGHT APPROX.: 271 kg

DIMENSIONS 1551 x 494 x 489 mm
Basic model, HxWxD:



SAFE WITHOUT FIREWALL

Jøtul F 480-series is a convection stove, with a lower surface heat, which makes it possible to put them close to combustible materials. The large glass offers a great view to the flames. The discreet designs are easily matched with any architectural style.



EFFICIENCY: 75 %

ECOLABEL: **A**

LOG SIZE: 30 CM

EFFECT NOMINAL: 6 KW



JØTUL F 481

The Jøtul F 481 has architectural clean lines that follow the wood stove's shape all the way to the floor. There is practical storage space for accessories, so that you can keep the area around the stove clutter-free. The shelf in the base comes as standard, but may be removed if you wish.

ACCESSORIES:

Floor plate in steel or glass and external air kit.



COLOURS:

● BLACK PAINT

WEIGHT APPROX.: 198 kg

DIMENSIONS Basic model, HxWxD: 1180 x 466 x 460 mm

JØTUL F 483

The Jøtul F 483 is characterised by Jøtul's bestselling signature design, where the wood stove sits on a pedestal. Top mounted with turntable (accessory) it is also possible to rotate the stove 360 degrees to enjoy the flames from several angles or locations in the room.

ACCESSORIES:

Floor plate in steel or glass, external air kit and rotating kit.



COLOURS:

● BLACK PAINT

WEIGHT APPROX.: 186 kg

DIMENSIONS Basic model, HxWxD: 1190 x 466 x 460 mm

LIVINGROOM CAMPFIRE

Jøtul F 520 and Jøtul F 520 HT offers a wide expanse of glass, the flames can be fully enjoyed from three sides of the stove. With a special glass coating feature, the glass stays clean.



EFFICIENCY: 77 %

ECOLABEL: **A**

LOG SIZE: 50 CM

EFFECT NOMINAL: 7 KW



JØTUL F 520

The smart construction of the air valves makes the stove easy to light and is user friendly. The white enamelled burn plates also offer a clean and light view of the burn chamber when the stove is not in use. In the base of the stove there is a practical room for wood storage.

ACCESSORIES:

Ash lip, floor plate in steel or glass and external air kit.



COLOURS:

● BLACK PAINT

WEIGHT APPROX.: 170 kg

DIMENSIONS Basic model, HxWxD: 1000 x 594 x 532 mm

JØTUL F 520 HT

Jøtul F 520 HT has a panoramic view to the flames. You get a feeling of an open fireplace, but with low wood consumption and environmentally friendly combustion. Jøtul F 520 High Top has room for 60 kg heat accumulating stones*) placed in the top of the stove which gives up to 12 hours extra heat after the last load of wood.

ACCESSORIES:

Jøtul Heat Storage System, ash lip, floor plate in steel or glass and external air kit.



COLOURS:

● BLACK PAINT

WEIGHT APPROX.: 201 kg

DIMENSIONS Basic model, HxWxD: 1319 x 594 x 532 mm

*) Read more about Jøtul Heat Storage System on page 37.

TIMELESS CLASSIC

The Jøtul F 602 Eco is one of Jøtul's timeless classics. With its iconic design, dating back to 1940, and modern combustion technology it offers the best of both worlds.

This wood stove has the possibility of connection to fresh air, and is adapted to even the most demanding modern homes. This is a practical wood stove, with both personality and character.



EFFICIENCY: 81%

ECOLABEL: **A+**

LOG SIZE: 40 CM

EFFECT Nominal: 4.9 KW



JØTUL F 602 ECO

The Jøtul F 602 Eco has the possibility of connection to fresh air, and is adapted to even the most demanding modern homes.

Jøtul F 602 Eco can also be used for cooking. It comes with a high-efficiency hotplate and can also be equipped with a smaller hotplate.

ACCESSORIES:

Hot plate Ø 125 mm, convection plate side, cover for outdoor air (floor), adapter for connection to fresh air, external air kit 80 mm and floor plate in steel or glass.



Wooden handle in line with Jøtul's classic design.

Jøtul F 602 Eco can also be used for cooking. It comes with a high-efficiency hotplate and can also be equipped with a smaller hotplate.



COLOURS:

- BLACK PAINT
- BLUE BLACK ENAMEL

WEIGHT APPROX.:

87 kg

DIMENSIONS

637 x 320 x 540 mm

Basic model, HxWxD:



Features a lion motif on the side.

JØTUL F 400 ECO

Jøtul F 400 ECO is one of the largest wood stoves in the classic line, with room for logs up to 50 centimeters. You can easily control the air flow with just one lever. Emptying the ash is practical and easy to, and is collected in a spacious ash drawer under the stove.



ACCESSORIES:

external air kit 80 mm, fresh air adaptor and short legs (155 mm).

EFFICIENCY: **84%**
 LOG SIZE: **50 cm**
 EFFECT NOMINAL: **7 kW**

COLOURS:

JØTUL F 400 Tracery door:

● BLACK PAINT

JØTUL F 400 Plain door:

● BLACK PAINT (SE)

● BLUE BLACK ENAMEL (SE)

○ IVORY ENAMEL (SE)

WEIGHT APPROX.:

158 kg

DIMENSIONS

Basic model, HxWxD:

727 x 670 x 597 mm

ECOLABEL:



JØTUL F 500 ECO

Jøtul F 500 ECO takes the legacy of the past into the future, as classic design and new heating technology merge. This is a large stove with a really smart use - it is possible to add wood both from the glass door in front, or from the beautifully decorated side door. It has an external ash solution that makes it easy to empty the ash and a practical ash lip effectively captures embers or ash.



ACCESSORIES:

Short legs (155 mm), external air connector and external air kit 100 mm.

EFFICIENCY: **82%**
 LOG SIZE: **55 cm**
 EFFECT NOMINAL: **8.8 kW**

COLOURS:

JØTUL F 500 Tracery door:

● BLACK PAINT

JØTUL F 500 Plain door:

● BLACK PAINT (SE)

● BLUE BLACK ENAMEL (SE)

○ IVORY ENAMEL (SE)

WEIGHT APPROX.:

200 kg

DIMENSIONS

Basic model, HxWxD:

732 x 793 x 713 mm

ECOLABEL:



INSERTS AND CASSETTES

The landscape 'air washed' doors on the Jøtul Cassettes and Inserts not only give a wonderful view of the fire; they are the central features of these built in fireplaces. Ideally sized to fit most conventional fireplace openings, the Jøtul Cassettes offer convected heat circulation to reach out to the corners of your room.

The Jøtul Cassettes and Inserts give you the pleasures of traditional home heating combined with an astounding fire view.





JØTUL I 520 - SERIES

Jøtul 520 is one of the most popular products in Jøtul's portfolio. With great view to the flames and its simple features, it has quickly gained recognition in the insert market.



EFFICIENCY: 77 %

ECOLABEL: **A**

LOG SIZE: 50 CM

EFFECT NOMINAL: 7 KW

ECO CERTIFIED:



JØTUL I 520

The Jøtul I 520 series is a flexible insert system that consists of four inserts. You can choose whether you want glass on one, two or three sides. The design is timeless and the construction optimal and futuristic. Jøtul I 520 has enamelled burn plates which provide a light and airy flame picture. All glass has a heat-reflecting surface that ensures cleaner glass and better combustion. Even though the insert is large, it works well even at 3.9 kW effect.

ACCESSORIES:

Complete leg stand, door lock left, broad frames, cassette grids, external air kit and complete convection top.

COLOURS:

● BLACK PAINT

WEIGHT APPROX.:

Up to 110 kg

DIMENSIONS, HxWxD:

(I 520 FRL) :

499 X 594 X 431 mm

(I 520 FR/FL) :

499 X 632 X 431 mm

(I 520 F) :

499 X 670 X 431 mm



Jøtul I 520 F



Jøtul I 520 FRL



Jøtul I 520 FR
showed with cassettes grids



Jøtul I 520 FL

Jøtul I 620 is easy to install and is just as suitable as a fireplace insert for open/old fireplaces as for fireplaces with a more contemporary design. It is up to you whether you want glass on one, two or three sides.



EFFICIENCY: 77 %

ECOLABEL: **A**

LOG SIZE: 60 CM

EFFECT NOMINAL: 9 KW

ECO CERTIFIED:



JØTUL | 620

Despite its size, this insert is designed to burn at an optimal level even at low effect. The burn chamber is light with burn plates made from white vermiculite and durable white enamelled cast iron. Symbols on the air-vents facilitate correct use of the fireplace. Equipped as standard with a slim, removable decorative frame that offers a smooth transition to the firewall.

ACCESSORIES:

Complete mounting kit, cassette grill, external air kit and steel floorplate.

COLOURS:

● BLACK PAINT

WEIGHT APPROX.:

Up to 171 kg

DIMENSIONS, HxWxD:

(I 620 F):

499 X 800 X 431 mm

(I 620 FR/FL):

499 X 762 X 431 mm

(I 620 FRL):

499 X 723 X 431 mm



Jøtul I 620 F



Jøtul I 620 FR



Jøtul I 620 FL



Jøtul I 620 FRL

RENEWAL OF OLD FIREPLACE

Jøtul cassettes are ideally sized to fit most conventional fireplace openings. A renewal like this one from an old open fireplaces into a modern and efficient closed combustion system, will not only provide a design improvement, but also better heating efficiency and less emissions. With a Jøtul I 400 Panorama the family still have a great view to the fire. It is easier to change than you may think.



EFFICIENCY: 74 %

ECOLABEL: **A**

LOG SIZE: 40 CM

EFFECT NOMINAL: 6 KW



JØTUL I 400

The Jøtul I 400 series offers modern design and technology. Jøtul I 400 Panorama has arched glass and offer a great view of the burning logs. Jøtul I 400 Harmony has two doors that can be folded to the side to offer the open fireplace feeling.

ACCESSORIES:

External air kit, installation kit for cassette, ash solution and grid.



COLOURS:

● BLACK PAINT

WEIGHT APPROX.:

125 kg

DIMENSIONS

492 x 640 x 422 mm

Basic model, HxWxD:

514 x 640 x 422 mm

CLEAN DESIGN

The Jøtul C 24 cassette offers one of the world's largest views to the fire, compared to the size of the cassette. The clean design makes it suitable for any interior style.

EFFICIENCY: **78 %**ECOLABEL: **A**LOG SIZE: **50 CM**EFFECT NOMINAL: **7 KW**

JØTUL C 24

The Jøtul C 24 cassette offers one of the world's largest views to the fire, compared to the size of the cassette. The clean design makes it suitable for any interior style. The burn chamber itself is surrounded by a convection box, making it ideal for transforming old, open fireplaces into modern and efficient closed combustion systems, whilst respecting the need to still have a great view to the fire.

ACCESSORIES:

Tangential fan, external air kit and set of convection adaptors.



COLOURS:

● **BLACK PAINT**

WEIGHT APPROX.:

136 kg

DIMENSIONS

Basic model, HxWxD:

510 x 705 x 441 mm

GAS – CLEAN & CONVENIENT

Jøtul gas products offer quick and efficient heating. The range consists of a classic and a modern gas stove in balanced flue versions all with the same high standard of finish and cast iron as found on our wood burning products. Gas allows instant heat without any preparation or cleaning, after a long day at work your room can have a glow within seconds of arriving home.

Balanced flue means venting the stove vertically through a roof or horizontally through an adjacent wall. Jøtul gas appliances are made with top quality recycled cast iron produced by our foundry in Norway. The technology and manufacturer of the finished products is at Jøtul North America, Portland, Maine where they have been pioneers in gas fire technology for the last 15 years and whose innovation include the trademarked Jøtul Heat fin and Jøtul burner system. Before you consult your Jøtul dealer determine how large your room is in cubic metres and determine where you would like to site the appliance.

Clean & Instant

Jøtul gas products offer an alternative to their wood burning cousins, still offering the same aesthetics and high standard of build quality but in a clean and convenient fuel option.



For convenience, turn on your stove in a few seconds and modulate the power of the device according to the temperature chosen with the remote control.

JØTUL GF 373 BF CE

The Jøtul GF 373 gas stove stands out with its modern aesthetics and pedestal base. Its unique line can be enhanced by the choice of a white enameled cast iron version. A mirrored interior gives greater depth and brightness to your view of the flames. For convenience, turn on your stove in a few seconds and modulate the power of the device according to the temperature chosen with the remote control.

COLOURS:

EFFICIENCY:

GAS TYPES:

DIMENSIONS

Basic model, HxWxD:

WHITE ENAMEL

up to 82.2%

NG

1156 x 445 x 454 mm





JØTUL GF 400 BF CE

The Jøtul GF 400 BF CE presents the perfect union of high efficiency and cast iron beauty. Its classic lines and Gothic arch double doors, frame a hand crafted log set. Complete with flames and glowing embers that give the Jøtul GF 400 BF CE unrivalled realism within the stove industry.

COLOURS:

EFFICIENCY:

GAS TYPES:

DIMENSIONS
Basic model, HxWxD:

● BLACK PAINT

up to 83.6%

NG

711 x 673 x 609 mm





WHAT TO CONSIDER WHEN INSTALLING A STOVE

Here are some issues that you should think through or investigate before you start the process of buying a new stove. They are relevant whether you go to one of Jøtul's network of dealers or if you want to do most of the work yourself (subject to planning permission).

Heating effect and living area

In order to get the most enjoyment from your stove, it is very important that the size is right for your living area and heating needs. If the stove is too big, you will constantly be using it shut down because you will not need the heat and end up with soot on the glass and in your chimney because it is not being run hot enough. (Please see the information on our clean-burn system). If the wood stove is too small, it will be over fired and its lifetime will be considerably reduced due to the excessive heat.

The dealer needs information about living area and type of insulation in your home in order to give you good advice. Normally, the need for heating in UK homes is about 1 kilowatt for every 14 cubic metres. To work out your requirements, multiply your room width and length measured in metres, by your room height in metres (i.e. 5m x 7m = 35 x 2.5m = 87.50). This means that your room, with a

normal sized window and number of doors, has a volume of 87.5 cubic metres and will need approximately a $(87.5 \div 14)$ 6 kW Jøtul stove. This can be reduced or increased by type of insulation, the number of windows, ceiling height and so on.

Ventilation

In order to function properly, the stove needs air. The chimney pulls air through the stove, but if your house is very well sealed and insulated, or if mechanical ventilation is fighting the natural draught in the chimney, you can experience problems with the function of the stove. The recommended solution is to connect so-called "outside air" or "closed combustion" to the stove.

If you live in a house with new and tight insulation or have mechanical extraction, it is important that you consider this when you plan the installation of your stove.

Window glass and insulation

Old and draughty houses with poor insulation need considerably more heating than houses with proper insulation and triple glazed windows. The scope of the heat loss in your home is something that you know best, but if you reside in a low energy house or a newer house, it is important to choose a stove that works well on low effect.

The Jøtul F 160 series is a great example of these type of wood stoves - it burns optimally even at 3 kW.

Chimney

Most problems with stoves stem from the chimney having incorrect dimensions or not working properly. In order for a stove to work optimally, a chimney should be sized and fitted correctly, in accordance to UK building regulations.

In the installation and User Guides you find information about the necessary draught for the different products to function optimally.

A rule of thumb is that 1 metre of chimney creates 4 Pascal of draught. Few stoves can function on less than 12 Pascal. Sharp bends on the flue outlet reduces the draught. If you are unsure about how your chimney works, the Jøtul retailer or the Chimney Sweep Association can help you. You can also get help to renovate or line your old chimney or alternatively install a steel chimney. Steel chimneys are reasonably priced and a satisfactory alternative to the traditional brick chimney.

Where the stove should be installed

Different stoves have different features. Some are designed to be placed close to flammable material, while others require a fireproof barrier in order to be placed close to the wall. A drawing that shows where the stove should be placed in relation to the chimney outlet, fireproof wall and furniture will be of great help when you seek advice with the experts.

Suitable hearth requirements

Most of Jøtul’s wood stoves are tested to EN 13240, part of which requires that the stove does not increase the temperature of the hearth the stove is sited on above 100 degrees centigrade. Current UK building regulations state that if an appliance does not raise hearth temperature above 100 degrees centigrade then the hearth does not need to be constructional and a supplementary hearth may be used. Your Jøtul dealer or local building control officer should be consulted for clarification and further instruction.

Installation

In the UK the installation should be carried out by a HETAS registered installer or signed signed off by your local building control inspector.

Talking to professionals from our network of dealers early on, can save you both time and money. They can give you useful advice that is fit for your needs, your living situation and of course, your budget. They are relevant whether you go to one of Jøtul’s network of dealers or if you want to do most of the work yourself (subject to planning permission).





DO YOU NEED HELP WITH INSTALLATION?

The Jøtul retailer often offers a complete installation service to ensure that the fireplace is installed according to all regulations. The product is delivered with with a QR code to access installation instructions.

The fireplace must be inspected by a Hetas qualified installer or your local building control inspection authority, before use. After installation the product must be registered with Hetas to report that changes were made to an existing fireplace or a new one was installed.



INTERNET POLICY

Jøtul's products are sold through a network of highly trained retailers, able to offer you the very best advice on the most suitable stove for your individual needs and circumstances, with the option of installation and appropriate after sales service for your purchase.

In order to ensure that you benefit from this, we do not recommend purchasing a Jøtul stove over the Internet where this level of advice and service may not be available.

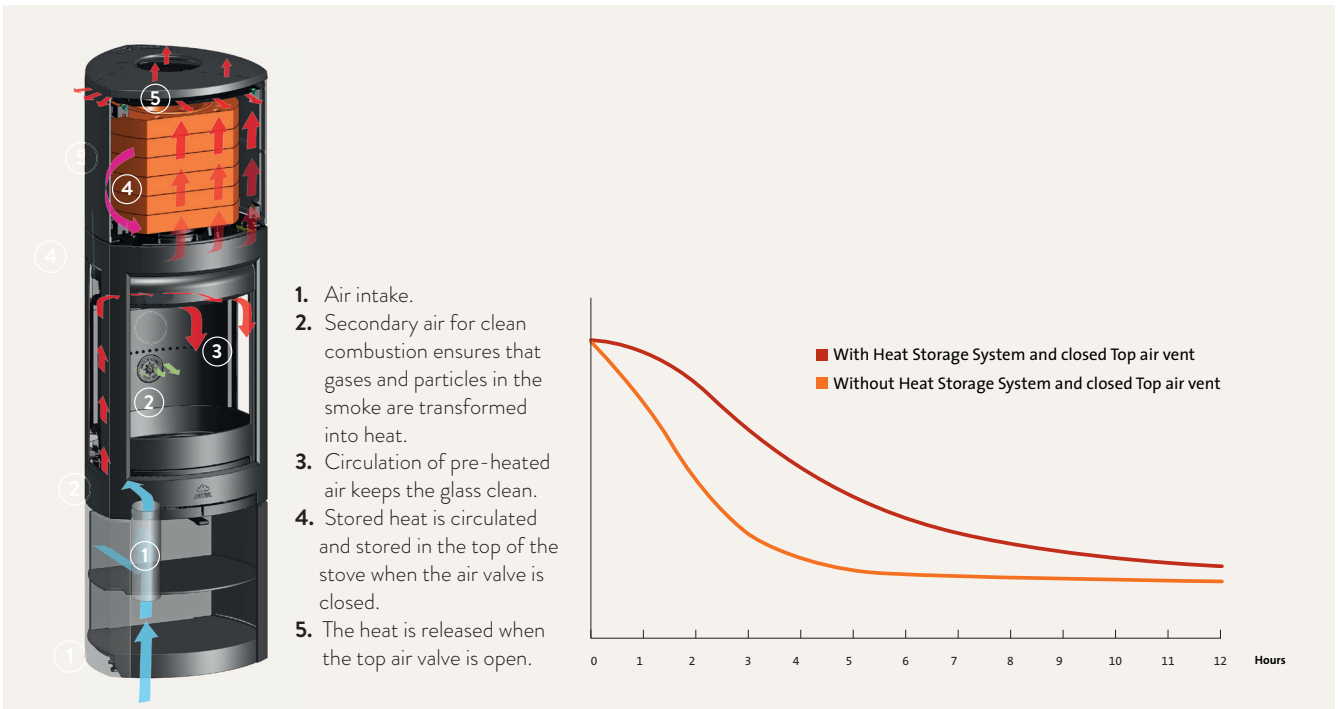
If you do decide to buy your stove over the Internet, ensure that you buy from a dealer who can offer expert advice on the most suitable product for your needs, and who is able to install your stove and service it when necessary.

In particular, we would suggest that you avoid buying Jøtul stoves over the Internet, especially from a retailer who is not local to you, and who is, therefore, unlikely to be able to provide you with the appropriate support.



HEAT STORAGE SYSTEM

Thanks to heat retaining stones placed in the top of the stove it can give up to 12 hours extra heat after the last load of wood. Light the fire in the morning and go to work, when you get home, it is still warm.





GET THE FIRE STARTED EVERY TIME

Start the fire from the top! Correct wood burning is more environmentally friendly, reduces costs and increases fire safety.

Starting the fire from the top provides quicker heating of the burn chamber, which provides proper draft in the flue and pipe quickly, more oxygen to the flames and higher temperature. The flames on the top heats up the logs underneath so that they release the gasses that make the fire burn and keep on burning. Use firelighters to ensure rapid lighting of the kindling wood on the top. In this way, you will avoid unnecessary smoke in the kindling phase.

Slow kindling and low temperature lead to an increase in airborne dust that is many times multiplied.

How to build a fire

Use logs of dry wood on the bottom and a mix of kindling wood and a couple of firelighters on the top. Finish it off with a large log.

Use dry wood

A rule of thumb is that dry wood is lighter and has deeper cracks. When hitting two logs against each other, it should sound like a bat hitting a ball. If you use wood with a higher moisture content (more than 20%), the emissions of soot and particles will be 10 to 30 times higher than if you use dry wood.

Light the fire from the top

Lighting the fire from the top will make the burn chamber heat up faster. Consequently, you get a nice draft in the flue and pipe, more oxygen for the flames and a higher temperature.

Make sure there is enough air

Make sure there is enough air in the house, so that the woodstove has enough air for the combustion process.

Kitchen fans and ventilation systems that pull air out of the house will reduce the draft in the chimney.

Open up all vents in the woodstove. Feel free to open the door slightly for up to 5 minutes until the fire is burning properly. When the fireplace is warm, after about 15 minutes, the vents can be adjusted again. It is important not to shut the damper (if used) too much, as this will suffocate the flames. The wood should always burn with a visible flame. Fires without flames emit twice as much soot and particles.

USE 40% LESS WOOD

Jøtul's clean burning fireplaces and stoves are more efficient and require much less wood than the "old" non clean burning, to produce the same amount of heat. If you burn correctly, this can mean a reduction in wood consumption by up to 40%. The environmental clean-burning stoves are entirely positive.

They reduce particulate emissions by 90% set against old fireplaces. The dual combustion system also allows the gases and particles burning up before they go up the chimney.





QUALITY OF JØTUL ENAMEL

Jøtul was the first manufacturer on the market with porcelain enamel for wood stoves more than 50 years ago. Durable, semi-gloss porcelain enamel surfaces are not only the best, but also the most beautiful. It highlights the contrast between textured and smooth surfaces in a very aesthetic way.

”An enamelled surface is durable and maintenance-free”

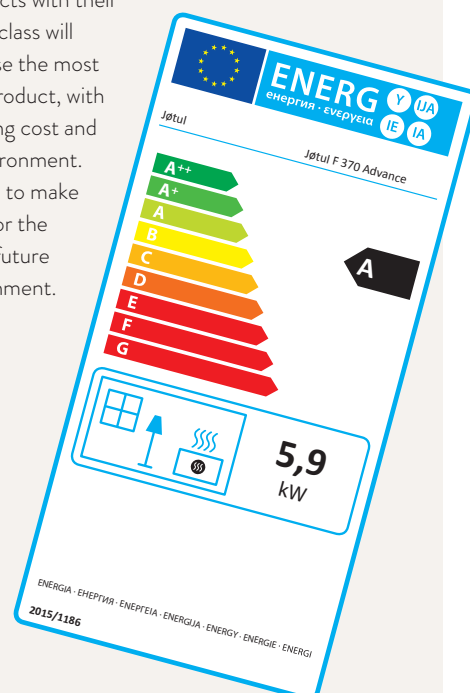
EFFICIENT HEAT

Jøtuls clean burning fireplaces and stoves work well at low effect in terms of efficiency and particulate emissions. Since the stoves are more efficient they also use less wood so that the cost for heating is reduced. Jøtul offers a wide range stoves that are ideal for new homes.

ECOLABEL

The Ecodesign - and the Ecolabel Directive are two instruments initiated by the EU. They aim to reduce the environmental impact of energy-related products throughout their life cycle. This allows you to choose the most energy-efficient wood stove on the market.

Marking our products with their energy-efficiency class will guide you to choose the most energy-efficient product, with the lowest operating cost and impact on the environment. All in order for you to make your best choice for the present, - for the future and for the environment.





25 YEARS GUARANTEE!

We wish to offer our customers the best of the best, and for this reason all products are handmade from the best available materials.

The exceptional durability is the reason that Jøtul offers a 25 year warranty against failure due to faulty manufacture - the longest on the market.



Your satisfaction revolves around our guarantee all Jøtul cast iron stoves and fireplaces are covered by a conditional 25-year guarantee from the date of purchase, against failure due to faulty manufacture if installed by a suitably qualified engineer.

The 25 year warranty is only available for appliances that have been purchased from an authorised Jøtul dealer and have been registered with Jøtul UK at www.jotul.co.uk you may also ask your authorised dealer to register your new appliance for you.

Jøtul AS warrants that the external cast-iron parts and steel plate parts are free from defects in materials or manufacturing for a period of 5 years from the date of purchase.

You may extend the warranty on external cast-iron parts to 25 years by registering your purchase within three months of purchase.

Warranty includes all components except consumables (grates and flame path equipment) and does not include labour.

We refer to full terms and conditions on our webpage:
www.jotul.co.uk/25-year-warranty-registration



RADIATION OR CONVECTION HEATING?

Did you know that different woodstoves create different types of heating? And they work in very different ways.

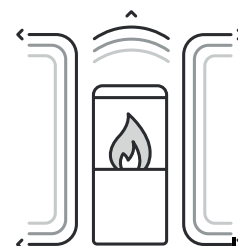
Research shows that people are most comfortable in a room where they feel warm up to chest height, but where the air is not too heavy to breathe in.

Most cast iron woodstoves provide radiation heating. The rays of heat will heat people, surfaces and objects in a room, and it works quickly. Radiation heating is ideal for rooms with high ceilings. It creates an

even heat where needed, so neither your feet nor your nose need to be cold. The concept of convection heating will draw cold air in under the woodstove, heat it up between double sidewalls and release it on the top. The heat rises to the ceiling and will gradually be “pressed” down. In the beginning your head will feel warmer than your feet. Convection woodstoves are a good choice if you want to place the woodstove near flammable materials or don’t have a firewall behind it.



Radiation heating



Convection heating

SYMBOLS



DEFRA exempt

Department for the Environment, Food & Rural Affairs. Exempt stoves are models that are cleared to burn specialised fuels in smoke control areas, fuels that would normally be disallowed. Many of our new ranges, such as our Cleanburn range of stoves, are designed and fitted with technology that means wood can be legally burnt within a smoke control area.



Clean burn

This means that fireplace has a dual combustion system that converts up to 90% of the gases and particles in smoke to heat. This provides the absolute minimum level of smoke emission because the fireplace uses the energy to give heat instead of smoke.



Closed combustion

Products with closed combustion system takes air through a separate air channel directly from the combustion chamber and through an outside wall or through the floor.



40 % Less wood







Modern wood stoves have 40 % more efficient combustion and 90 % fewer emissions than old fireplaces.

TECHNICAL INFORMATION – ALL THE DATAILS

Choosing a Jøtul stove is supposed to be easy. This is why we have chosen to provide a detailed overview of everything you need to know before making your choice. The manual is always to be used for installation, but the sketches in this section will give you a good technical overview.

Measurements and Clearances state the dimensions of the product and distances to be taken into consideration when assembling. Jøtul recommends a furniture distance from fireplace at minimum 1000 mm.

Our dealers are highly competent and are always available if you have any questions.

	JØTUL F 100 ECO.2 LL/ F 100 ECO.2 LL SE	JØTUL F 100 ECO.2 SL/ F 100 ECO.2 SL SE	JØTUL F 105 LL	JØTUL F 105 B	JØTUL F 105 SL	JØTUL F 134	JØTUL F 135
STANDARD:							
Heating capacity up to m ²	107	107	86	86	86	100	100
Efficiency (%)	80	80	83	83	83	83	83
Maximum log lenght (cm)	35	35	33	33	33	25	25
Heat output (Nominal)	4,9	4,9	4,5	4,5	4,5	4,7	4,7
External air connection	-	-	•	•	•	•	•
Flue outlet: Top(T) / Rear (R) / Side (S)	T/R	T/R	T/R	T/R	T/R	T/R	T/R
Distance to combustible (calculated with semi-insulated steel chimney. Some products may need convection plate) Rear/side/corner (mm)	100/500/350**	100/500/350**	100/400/300	100/400/300	100/400/300	100/300/100	100/400/180
Distance to firewall Rear/side/corner (mm)	40/100/40	40/100/40	75/150/100	75/150/100	75/150/100	50/150/50	50/200/50
Height flue outlet mm (top)	630	630	690	690	690	1053	1053
Height center flue outlet mm (rear)	526	526	590	590	450	952	952
Outside air connection, distance from rear to centre flue pipe A (mm)*	-	-	110	110	110	123	123
Outside air connection, distance from floor to centre flue pipe B (mm)*	-	-	216	80	80	108	108
Flue size - Ø (mm)	125/150	125/150	125	125	125	150	150
Weight approx. (kg)	89	89	97	107	94	140	140
Dimensions (mm) (HxWxD)	658x528x445	598x528x445	690x410x325	690x410x325	550x410x325	1098x410x396	1098x410x396
Ash solution (*accessories)	•	•	•	•	•	•	•
FINISH OPTIONS:							
BP Black paint	•	•	•	•	•	•	•
WHE White enamel			•		•		
IVE Ivory enamel	• (SE)	• (SE)					
BBE Blue black enamel	• (SE)	• (SE)					
QR-CODE:							
Scan the QR-code and find all information and technical documentation online.	See www.jotul.co.uk for more information						

* see sketch on page 45

** SL requires constructional hearth with 350 mm projection from stove glass.



HOW TO SCAN QR-CODES

To find user guide, assembly instructions and other documentation, please scan the QR code below the product

1. Use a QR-scanner app downloaded from Google Play or App store // IOS users: Open the default camera app
2. Hold your device so that the QR code appears in the window
3. Tap the notification to open the link

JØTUL F 136	JØTUL F 137	JØTUL F 162/F 163	JØTUL F 165	JØTUL F 167	JØTUL F 200	JØTUL F 205	JØTUL F 232	JØTUL F 233	JØTUL F 305 LL/ SL	JØTUL F 305 B
100	100	129	129	129			114	114	145	145
83	83	82	82	82	82	82	80	80	79	79
25	25	33	33	33	37	37	33	33	41	41
4,7	4,7	5	5	5	5	5	6	6	7	7
•	•	•	•	•	•	•	•	•	•	•
T/R	T/R	T/R	T/R	T/R	T/R	T/R	T/R	T/R	T/R	T/R
100/300/100	100 400/180	150/700/400	150/700/400	150/700/400	50/350/150	50/375/175	30/350/50	30/550/325	100/400/250	100/400/250
50/150/50	50/200/50	100/300/150	100/300/150	100/300/150	50/200/100	50/219/115	30/175/50	30/350/150	50/200/50	50/200/50
1053	1053	863	993	993	755	755	973	973	795	795
952	952	789	919	919	623	623	831	831	730/530	730
123	123	119	108	229	167	167	-	-	135	135
108	108	100	133	138	210	210	-	-	100	100
150	150	150	150	150	150	150	150	150	150	150
120	120	115	145	140	138	138	129	130	137	163
1098x410x396	1098x410x396	903x450x447	1033x450x447	1033x450x447	755x561x472	755x521x472	1012x471x399	1012x471x399	850x560x395 650x560x395	850x560x395
•	•	•	•	•	•	•	•	•	•	•
•	•	•	•	•	•	•	•	•	•	•
		• (F 163)							• (LL)	

FIND ALL DOCUMENTATION ONLINE

There are many things to consider when buying and installing a new wood stove or fireplace. Do you have a standard flue or not, are you going to place the stove on a wall or in a corner, whether you have recessed or exposed firewall or not one at all? Find help and guidance on our website.

Select product, click **Technical Specifications**. Here you will find everything from weight to performance.

Documents gives you access to all manuals, floor plan drawings and any technical documents you may need.



All documentation on our products is always available on our web pages at jotul.uk

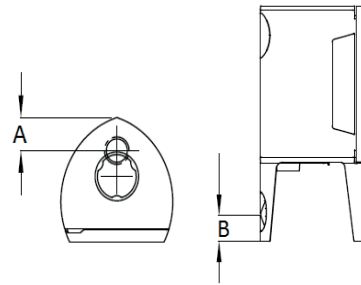
Or by scanning the QR-code under the product.

	JØTUL F 361 V2 ADVANCE	JØTUL F 361 V2 HT ADVANCE	JØTUL F 363 V2 ADVANCE	JØTUL F 368 V2 ADVANCE	JØTUL F 368 V2 HT ADVANCE	JØTUL F 371 V2 ADVANCE	JØTUL F 371 V2 HT ADVANCE
STANDARD:							
Heating capacity up to m ²	100	100	100	100	100	100	100
Efficiency (%)	78	78	78	78	78	78	78
Maximum log length (cm)	33	33	33	33	33	33	33
Heat output (Nominal)	6	6	6	6	6	6	6
External air connection	•	•	•	•	•	•	•
Flue outlet: Top(T) / Rear (R) / Side (S)	T/R	T/R	T/R	T/R	T/R	T/R	T/R
Distance to combustible (calculated with semi-insulated steel chimney. Some products may need convection plate) Rear/side/corner (mm)	100/525/425	100/525/425	100/525/425	100/525/425	100/525/425	75/700/450	75/700/450
Distance to firewall Rear/side/corner (mm)	50/200/150	50/200/150	50/200/150	50/200/150	50/200/150	50/450/200	50/450/200
Height flue outlet mm (top)	1090	1090 + flue 450	1090	1090	1090 + flue 450	1090	1090 + flue 450
Height center flue outlet mm (rear)	1025	1025	1025	1025	1025	1025	1025
Outside air connection, distance from rear to centre flue pipe A (mm)*	68	68	68	68	68	68	68
Outside air connection, distance from floor to centre flue pipe B (mm)*	120	120	-	120	120	120	120
Flue size - Ø (mm)	150	150	150	150	150	150	150
Weight approx. (kg)	172	201	164	179	208	164	193
Dimensions (mm) (HxWxD)	1155x443x453	1534x443x453	1155x443x453	1155x443x453	1534x443x453	1155x443x453	1534x443x453
Ash solution (*accessories)	•	•	•	•	•	•	•
FINISH OPTIONS:							
BP Black paint	•	•	•	•	•	•	•
WHE White enamel							
IVE Ivory enamel							
BBE Blue black enamel							
QR-CODE:							
Scan the QR-code and find all information and technical documentation online.							

* see sketch on page 45





FLUE OUTLET SKETCH

The most common measurements to flue outlet is shown in the overview where it refers to A and B dimensions. Please see jotul.co.uk for further information or scan the QR code below the product.




JØTUL F 373 V2 ADVANCE	JØTUL F 377 V2 ADVANCE	JØTUL F 377 V2 HT ADVANCE	JØTUL F 378 V2 ADVANCE	JØTUL F 378 V2 HT ADVANCE	JØTUL F 400 ECO / F 400 SE ECO	JØTUL F 481	JØTUL F 483	JØTUL F 500 ECO	JØTUL F 520/HT	JØTUL F 602 ECO
100	100	100	100	100	150	143	143	157	157	121
78	78	78	78	78	84	75	75	82	77	81
33	33	33	33	33	50	30	30	55	50	40
6	6	6	6	6	7	6	6	8.8	7	4.9
•	•	•	•	•	•	•	•	•	•	•
T/R	T/R	T/R	T/R	T/R	T/R	T/R	T/R	T/R	F 520=T/R F 520HT=T/R	T/R
75/700/450	50/600/450	50/600/450	75/700/450	75/700/450	300/570/400	100/350/100	100/350/100	150/400/230	300/700/563	250/250/200
50/450/200	50/424/200	50/424/200	50/450/200	50/450/200	100/100/100	50/200/50	50/200/50	200/200/150	100/500/213	100/100/100
1090	1090	1090 + flue 450	1090	1090 + flue 450	727	1120	1120	732	950/950 + flue 370 HT	637
1025	1025	1025	1025	1025	645	1025	1025	632	1024 kun HT	547
68	68	68	68	68	114	102		85	88	68
-	120	120	120	120		145	145	179	140/584	
150	150	150	150	150	150	150	150	150	150	125
156	221	271	171	200	158	198	186	200	170/201	87
1155x443x453	1172x494x489	1551x494x489	1155x443x453	1534x443x453	727x670x597	1180x466x460	1190x466x460	732x793x713	1000x594x532 1319x594x532	637x320x540
•	•	•	•	•	•	•	•	•	•	•
•	•	•	•	•	•	•	•	•	•	•
					• (F 400 SE) • (F 400 SE)			• (F 500 SE) • (F 500 SE)		•

WOOD INSERTS

	JØTUL I 400 HARMONY / PANORAMA	JØTUL I 520 F, FR/FL, FRL	JØTUL I 620 F, FR/FL, FRL	JØTUL C 24
STANDARD:				
Heating capacity up to m ²	129	143	171	250
Efficiency (%)	74	77	77	78
Maximum log length (cm)	40	50	60	50
Heat output (Nominal)	6	7	9	7
External air connection	•	•	•	•
Flue outlet: Top(T) / Rear (R) / Side (S)	T	T/R	T	T
Height center flue outlet mm (rear)	959	529		556
Flue size - Ø (mm)	150/175	150/175	150/175	150/175
Weight approx. (kg)	125	110	153/162/171	136
Dimensions (mm) (HxWxD) <i>Dim. for insert is measured HxW (outer measures front)</i>	524x640x422	499x670x431 499x632x431 499x594x431	499/800/431 499/762/431 499/723/431	510x705x441
Ash solution (*accessories)	•*			•*
FINISH OPTIONS:				
BP Black paint	•	•	•	•
QR-CODE:				
Scan the QR-code and find all information and technical documentation online.				

GAS STOVES

	JØTUL GF 400 BF CE	JØTUL GF 373 BF CE
STANDARD:		
Heating capacity up to m ³	220	170
Efficiency (%)	up to 83.6	up to 82.2
Gas type	Natural Gas	Natural Gas
Heat output (Nominal)	up to 5.9	up to 5.7
Venting (mm)	100/150	100/150
Flue outlet: Top (T) / Rear (R) / Side(S)	T	T
Weight approx. (kg)	113	140
Consumption	G20:1	G20:1
Dimensions, Hx WxD (mm)	724x673x530	1156x445x454
FINISH OPTIONS:		
BP Black paint	•	
WHE White enamel		•
QR-CODE:		
Scan the QR-code and find all information and technical documentation online.	See www.jotul.co.uk for more information	



Retail info:

November 2021 Cat. no. 50052989

PRODUCT CATALOGUE 2022

Jøtul is continuously working to improve our products and we reserve the right to make amendments regarding specifications, colours and equipment without previous warning. We are not responsible for printing errors. Some products might be depicted with accessories.