



BRITISH MADE



www.elginandhall.co.uk

ELECTRIC FIRE & FIREPLACE COLLECTION

P R  Z M

REVOLUTIONIZING FLAMES



WELCOME

A Pryzm fireplace could be a rewarding addition to your home and its value. Since the foundation of our parent company in 1963, we have successfully continued to grow from our base in the North East of England. Every product is designed here in the UK by our in-house development team.

Over 58 years of continuous innovation and development has provided us with a collection of fires and fireplaces to suit any interior and lifestyle, whilst always adhering to our founding principles of elegance and simplicity. This timeless quality means your chosen fireplace will always be comfortably in agreement with your tastes in furnishing and décor.

You can rest assured that our fires are engineered, produced and tested for peak performance and reliability.

Our designs keep up with changing lifestyles and include features which only we can produce thanks to our investment in the latest machinery. At the same time, we depend on our craft skills to hand finish and polish each marble or timber piece to perfection. It is this balance of innovation and heritage that makes your Pryzm fireplace uniquely special.

As part of the BeModern® Group we manufacture a range of product in house, to include, surrounds, fires and fireplaces in marble, limestone and timber, as well as steel and cast stoves. Our bathroom range suits both the traditional and contemporary home.



CONTENTS

Introduction.....	4-7
Technical Spec.....	56-57
Our Brands.....	59

ARTEON

Arteon Introduction.....	8-9
Arteon 1000 3SL.....	10-11 NEW
Arteon 1250 3SL.....	12-13 NEW
Arteon 1500 3SL.....	14-15 NEW

TIMBER

Introduction.....	16-17
Evento.....	18-21 NEW
Camino.....	22-23
Vardo.....	24-29
Huxton.....	30-33
Velino.....	34
Arana.....	35
Lavina.....	36
Caselli.....	37

MARBLE

Introduction.....	38-39
Verdant.....	40-41 NEW
Impero.....	42-45
Vistus.....	46
Alesso.....	47
Cabrina.....	48-49

INSET FIRES

Volta.....	50-51
22" Inset Fires.....	52-53
16" Inset Fires.....	54-55

UNIQUE FLAME & FUEL BED EFFECTS

SIT BACK, RELAX AND PREPARE FOR A SPELLBINDING PERFORMANCE AS YOU BRING THE PRYZM TO LIFE WITH ONE CLICK OF THE CONVENIENT REMOTE CONTROL.

It's the patent pending 5D flame effect which makes this centrepiece so unique and desirable. Discover the full, dramatic expanse of the panoramic screen as the fuel bed ignites with a hypnotic and mesmerising display of flickering flames. Appreciate the full contours of each LED flame which will dance before you upon a bed of ultra-real logs.

Remaining cool to touch, you will be forgiven and permitted to reach out and admire the handcrafted and hand painted logs, finished to a level of realism and artistry that will astound you. Locked into place and strategically positioned to create a natural composition, the logs will glow with smouldering illumination when your fireplace is ignited. For added depth, a secondary internal glowing log bed rests behind the glass, adding a deeper 5th dimension of illusion and enchantment. It's truly mesmerising.



Image shown is from the Arteon and Evento fires.

MOONSTONE WHITE

FUCHSIA

VIOLET

PLUM

ROYAL BLUE

SAPPHIRE

AQUAMARINE

OCEAN BLUE

JADE GREEN

EMERALD GREEN

YELLOW

AMBER

RUBY

WHY CHOOSE PRYZM?

CONTEMPORARY AND INNOVATIVE SOLUTIONS TO ENRICH, ASSIST AND ENHANCE MODERN DAY LIFE.



INNOVATION

Quick, clean and simple to install, the Pryzm will fit against any flat wall, with no need for messy and unsightly building work. The Arteon & Volta will require a hole in the wall installation.



ECO DESIGN COMPLIANT

A 2kW or 1.5kW output provides instant, comforting heat when you arrive home, supplements central heating or allows you to heat just one room when the weather is on the cooler side. Our flame-effect only option gives you the same delightful visual performance, but without the heat during the warmer months.



BRITISH STANDARDS

Our products are thoroughly tested to ensure that they meet the highest standards of quality, safety and environmental performance.



PATENT & DESIGN REGISTRATION

An industry first in electric fire innovation, the Pryzm lives up to the reputation that preceeds it. We have a patent pending to protect our unique 5D flame effect which delivers a realism which will amaze. The surround design registrations have also been filed, assuring that you are investing in a unique electric fireplace.

REMOTE CONTROL

7 DAY PROGRAMMABLE THERMOSTAT

5D FLAME EFFECT

- Three entrancing flame effects
- Realistic log bed
- Smoulder and smoke effect

MULTI LED EFFECT FUEL BED

- Distinctive fuel bed
- Ambient light from beneath pebbles
- Appearance of smouldering embers
- Select your desired hue
- Experience all 13 colour options on rotation

PROGRAMMABLE

- Daily and weekly programmable
- With three daily settings
- Automatic turn off when reaches the end of a schedule
- Automatic turn off when handset detects room has reached preferred level
- Advanced mode to override schedule

HEAT MANAGEMENT SYSTEM

- 7 Day Programmable Thermostatic remote control

TIMER FUNCTION

- Will turn off automatically after a set period of time
- From half an hour up to 9 hours

OPEN WINDOW SENSOR

- 'Window Open' warning and your fire will automatically turn off
- Fireplace will resume as programmed heat returns

UNIQUE FEATURES



Up to 2kW or 1.5kW heat output



5D flame effect with three flame colour settings



A multi - LED effect fuel bed with 13 colour options and rotation setting



Patent pending design



Realistic post flame smouldering smoke effect



7 Day Programmable Thermostatic remote control



Eco Design Compliant



Realistic, hand painted, loose log display



Down lights illuminate the loose logs



Panoramic glass screen for optimum flame performance



Glowing ember effect with miniature pebble fuel bed

ARTEON:

YOU'RE IN CONTROL
WITH ENDLESS POSSIBILITIES.
CREATE YOUR ULTIMATE BESPOKE CENTREPIECE

3 SIDED GLASS ELECTRIC FIRE

Designed to allow for a 1, 2 or 3 sided installation, the Arteon 3 sided inset hole in the wall electric fire is an innovation in versatility and available in 3 convenient sizes 1000mm, 1250mm & 1500mm. The panoramic design creates a remarkable visual impact with 5D flame effect, glowing ember effect and new realistic, hand painted log display.

The shimmering fuel bed with multi-LED effect has 13 dimmable colour options and rotation setting whilst down lights illuminate the loose logs. Design your perfect fuel bed effect with the inclusive pebbles, bark, slate & crystals; the finished look will be bespoke to you. The optional LED mood lighting kit simply works off the same remote control and pairs with the fuel bed lights.



REIMAGINED - INFINITELY BESPOKE



HOLE IN THE WALL



WALL MOUNTED





1 Sided



2 Sided



3 Sided

ONE FIRE - INFINITELY BESPOKE

OPENING
TO FIT & INSET THE FIRE

MODEL	WIDTH	HEIGHT	MIN DEPTH		
			1 SIDED	2 SIDED	3 SIDED
ARTEON 1000-3SL (1, 2 OR 3 SIDED)	1003mm	525mm	255mm*	246mm	246mm
ARTEON 1250-3SL (1, 2 OR 3 SIDED)	1253mm	525mm	280mm*	271mm	271mm
ARTEON 1500-3SL (1, 2 OR 3 SIDED)	1503mm	525mm	280mm*	271mm	271mm

* Includes required 10mm rear clearance.

VISIBLE BURN AREA
AFTER FITTING

MODEL	WIDTH	HEIGHT	DEPTH 2/3 SIDED
ARTEON 1000-3SL (1, 2 OR 3 SIDED)	995mm	380mm	152mm
ARTEON 1250-3SL (1, 2 OR 3 SIDED)	1245mm	380mm	177mm
ARTEON 1500-3SL (1, 2 OR 3 SIDED)	1495mm	380mm	177mm

Tolerance +/- 1mm. Please refer to installation instructions for more info

EXTRA FEATURES

- 

Discreet heater system
- 

1, 2 or 3 Sided Installation
- 

Create your perfect bespoke centrepiece
- 

A comfortable 1.5kW output



Logs



Crystals



Pebbles



Bark



Slate

ARTEON 1000

INSET WALL MOUNTED

A BREATHTAKING DISPLAY OF DRAMATIC FLAME EFFECT AND LIGHTS BRINGS THE ARTEON TO LIFE

The Arteon 3 sided electric fire is designed to allow for a 1, 2 or 3 sided installation straight out of the box. The pioneering design with exceptional 5D flame effect creates a remarkable visual impact and draws the eye to the shimmering fuel bed within.

Design your perfect fuel bed amongst the realistic, hand painted loose log display; Crystals, Pebbles, Slate and Bark allow for a multitude of displays which is beautifully illuminated by the down lights. Optional mood lighting can be easily adapted and controlled with the touch of a button on the same 7 day programmable thermostat remote control that selects the colours and settings for the fuel bed.

A discreet heater system gives a comfortable 1.5kW heat output; absorb the ambience of the multi-LED effect fuel bed with 13 dimmable colour options and rotation setting.



1 SIDED



3 SIDED





ARTEON 1000-3SL

1 SIDED: W1002 x H515 x D257mm

2 SIDED: W1015 x H515 x D257mm

3 SIDED: W1028 x H515 x D257mm



ARTEON 1250

INSET WALL MOUNTED

**DELIGHTFULLY UNIQUE ELECTRIC FIRE TO CREATE
A WHOLE NEW LEVEL OF ADMIRATION**

With endless possibilities, the Arteon 3 sided electric fire can be installed as a 1, 2 or 3 sided centrepiece, truly bespoke to you. The panoramic display is delightfully mesmerising as the shimmering fuel bed and ultra-real looking hand painted loose logs combine perfectly; further enhance the fuel bed with the inclusive pebbles, bark, slate or crystals.

Create your desired mood with the optional LED mood lighting kit that simply works off the same remote control where you have on offer all the colours and settings as the fuel bed.

The glass screen allows for optimum flame performance; the 5D flame effect with three flame colour settings and five brightness options is a sight to behold.



3 SIDED



2 SIDED





ARTEON 1250-3SL

1 SIDED: W1252 x H515 x D282mm

2 SIDED: W1265 x H515 x D282mm

3 SIDED: W1278 x H515 x D282mm



ARTEON 1500

INSET WALL MOUNTED

REVOLUTIONARY DESIGN FOR THE ULTIMATE CENTREPIECE

The grand stature of the Arteon 3 sided 1500 electric fire will captivate the room, whilst the dazzling 5D flame effect and multi-LED effect fuel bed with 13 colour options and rotation setting glimmers impressively upon the realistic hand painted loose log display.

The Arteon incorporates a discreet 1.5kW heater system, with a convenient 7 day programmable thermostat remote control. Indulge in the ability to create your own bespoke centrepiece with four fuel bed dressing options and optional mood LED down lights paired with the fuel bed to match colours. Instal either 1, 2 or 3 sided straight out of the box.





ARTEON 1500-3SL

1 SIDED: W1502 x H515 x D282mm

2 SIDED: W1515 x H515 x D282mm

3 SIDED: W1528 x H515 x D282mm



PRYZM:

DEFIANT IN STATURE AND SUPERIOR IN STYLE,
THE PRYZM MAKES ITS PRESENCE FELT,
ADMIRER AND DESIRED.

INTRODUCTION TO TIMBER

The innovative design and smooth, clean lines combine to achieve the unique silhouette which makes this electric fireplace so distinctive. To ensure that the proportions marry your interior allowances, the Pryzm in timber finish, is available in a choice of sizes.

Let the Pryzm transform your home to a whole new level of contemporary living. Appearing to defy gravity, this wall mounted centrepiece will confidently grace your wall. Quick and easy to install, the look could not be easier to achieve with no need for a chimney or flue and no messy building work.

A removable plinth is available as an optional extra, if desired on the Camino & Vardo suites. Simply slide the plinth into place at the base to give the look of a floorstanding fireplace whilst still being a wall mounted product.



FLOORSTANDING LOOK

COMPLETE WITH REMOVABLE PLINTH*
(MUST BE WALL MOUNTED)



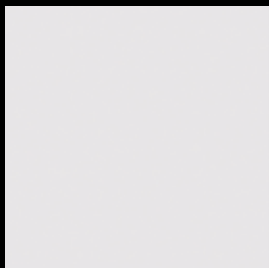
WALL MOUNTED



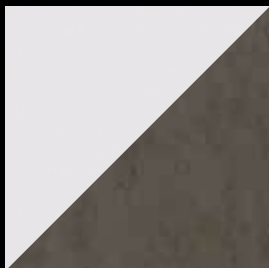
*Plinth does not support suite weight | Suite must be wall mounted

FINISHES

ASH WHITE



ASH WHITE &
CHICAGO CONCRETE



ASH WHITE &

VINTAGE OAK GREY



MATT CASHMERE
& ANTHRACITE



FLAT WALL FITTING

Fitting comfortably against any flat wall (no chimney breast required), installation is quick and simple. Stability and support is supplied with an easy fit bracket which will be fitted to your wall, ruling out the need for messy building work.



BUILD QUALITY

It's this meticulous attention to detail and the considered refined features, synonymous with the Pryzm brand, which give this fireplace the contemporary edge. Steeped in heritage, we are proud of our high quality standards, our craftsmanship and our visionary approach to design.



MADE IN BRITAIN

Designed, manufactured and hand finished in the UK, every edge of the surround has been mitred to ensure smooth contours and a flawless finish.

The craftsmanship that we devote to producing fireplaces in our workshops is matched by innovation. Our collections have clever touches and refinements, pioneered by our in-house technology; another reason why a Pryzm fireplace is the perfect addition to your home.

EVENTO 54"

TIMBER SUITE | FLOORSTANDING

CONTEMPORARY AND CAPTIVATING IN EQUAL MEASURE

The floorstanding 54" Evento provides a contemporary style with all of the captivating functionality of the Arteon 1000 3 sided electric fire which sits neatly within the Ash White timber fireplace.

The inclusive mood LED down lights, paired with the fuel bed to match colours allows for an ambient panoramic display. A comfortable 1.5kW heat output is gently emitted from the discreet heater system whilst the 5D flame effect is brought to life with the multi-LED effect fuel bed, offering 13 colour options and rotation setting.

Create your ideal centrepiece with the 7 day programmable thermostat remote control and optional fuel bed dressing options.





ASH WHITE

W1370 x H842 X D320mm

COMPLETE WITH MANTLE SMARTSENSE LIGHTS
& PLINTH MOOD LED DOWN LIGHTS

NEW

1.5kW

MOOD
LED

FLAT
WALL FIX



EVENTO 64"

TIMBER SUITE | FLOORSTANDING

OUTSTANDING VISUAL INNOVATION PROVIDES DRAMATIC STYLE

Add a touch of sophistication to your home with the iconic design of the 64" Evento which is perfectly combined with outstanding visual innovation; the floorstanding timber fireplace in Ash White painted finish makes for a dramatic style.

The multi-LED effect fuel bed, glowing ember effect and optimum flame performance can be admired from 3 sides and the LED smartsense down lights are mesmerising in illuminating the loose log display, which can be dressed in additional crystals, pebbles, slate and bark for a bespoke centrepiece.





ASH WHITE

W1620 x H842 x D345mm

COMPLETE WITH MANTLE SMARTSENSE LIGHTS
& PLINTH MOOD LED DOWN LIGHTS

NEW

1.5kW

MOOD
LED

FLAT
WALL FIX



CAMINO 53"

TIMBER SUITE | WALL MOUNTED / FLOORSTANDING LOOK WITH OPTIONAL PLINTH

A CONTEMPORARY CHIMNEY BREAST DESIGNED FOR A SIMPLE, FAST & EFFORTLESS INSTALLATION.

The desirable Camino wall mounted fireplace, is available in two stunning finishes and perfectly incorporates the Pryzm electric fire to create a beautiful, instant centrepiece. The perfect choice for a simple, quick and clean installation.

Complete with LED mood lighting situated under the plinth provides infinite colour and brightness settings by using our downloadable App on your smart phone or tablet. Or simply use the included handheld remote control offering 12 pre-set colours.

You can talk to Amazon Alexa or Google Assistant on the Camino. With your voice commands you can ask to change the colour and brightness of the LED mood lights to your preferred setting.

Note: Plinth does not support suite weight | Suite must be wall mounted with supplied fixing kit



W1350 x D290mm
H2009 + 244 WITH PLINTH



ASH WHITE & VINTAGE OAK GREY



VARDÖ 47"

TIMBER SUITE | WALL MOUNTED / FLOORSTANDING LOOK WITH OPTIONAL PLINTH

A DESIRABLE DISTRACTION FROM THE ENDLESS RAPID PACE OF EVERYDAY LIFE, THE PRYZM IS SIMPLY SUBLIME.

Ideal for compact living spaces, the 47" Pryzm will fill your home with comforting heat, in an instant. Choose between two striking colour options: the new Ash White & Vintage Oak Grey or Matt Cashmere & Anthracite, both deliver a bold statement that demands visual attention. You won't be disappointed by the dramatic flame performance. Captivating, engaging and intriguing, the 5D flame effects will mesmerize you.

A removable plinth is available as an optional extra. Simply slide into place at the base of the fireplace transforming it into a floorstanding suite.

Note: Plinth does not support suite weight | Suite must be wall mounted with supplied fixing kit



W1200 x D277mm

ASH WHITE H626 + 201 WITH PLINTH

CASHMERE H609 + 201 WITH PLINTH



MATT CASHMERE & ANTHRACITE

FLAT
WALL FIX



VARDÖ 53"

TIMBER SUITE | WALL MOUNTED / FLOORSTANDING LOOK WITH OPTIONAL PLINTH

PROVIDE A DRAMATIC UPLIFT TO YOUR LIVING SPACE WITH THE 53" PRYZM ELECTRIC FIREPLACE.

Allow the Pryzm to adapt to your life pattern; choose your level of instant heat, your flame effect, and your fuel bed glow, to suit your desired ambience. The dazzling 5D LED flame effect blends harmoniously with gentle illumination which glimmers impressively between tiny pebbles scattered across the expanse of the fuel bed. It's truly magical to observe and a delight to experience.

Available as an optional extra, a removable plinth permits you to quickly transform the look of your fireplace, as and when you wish. Convert your floating wall mounted surround with ease, simply by sliding the plinth into position at the base, transforming it effortlessly into a complete floorstanding model.

Note: Plinth does not support suite weight | Suite must be wall mounted with supplied fixing kit



MATT CASHMERE & ANTHRACITE



TOP WIDTH: 48"



W1350 x D277mm

ASH WHITE H626 + 201 WITH PLINTH

CASHMERE H609 + 201 WITH PLINTH



ASH WHITE & VINTAGE OAK GREY

FLAT
WALL FIX



VARDÖ 57"

TIMBER SUITE | WALL MOUNTED / FLOORSTANDING LOOK WITH OPTIONAL PLINTH

FOR ULTIMATE IMPACT, THE VARDÖ IS THE PERFECT CHOICE

The panoramic screen stretches across the width of the surround to showcase the 5D flame performance, created with advanced LED technology, exclusive to Elgin & Hall.

For an alternative yet equally stunning look, a removable plinth is available as an optional extra. The convenient plinth slides effortlessly into place at the base of the fireplace transforming it into a floorstanding model. Versatility and beauty combine to offer the ultimate centrepiece for your home.

Note: Plinth does not support suite weight | Suite must be wall mounted with supplied fixing kit



W1450 x D277mm

ASH WHITE H626 + 201 WITH PLINTH

CASHMERE H609 + 201 WITH PLINTH



ASH WHITE & VINTAGE OAK GREY

FLAT
WALL FIX



HUXTON 41"

TIMBER SUITE | WALL MOUNTED

PRYZM TAKES FIREPLACE DESIGN TO A WHOLE NEW LEVEL, QUITE LITERALLY.

This creative masterpiece will blend beautifully with any interior space, yet it comes alive with an array of dynamic features which will have you enthralled, hour after hour. A button click on the remote control ignites gentle illumination which glows in a variety of shades across the expanse of the dramatic, elongated fuel bed. For ultimate escapism, bask in the 2kW instant radiating heat accompanied with our 5D flame effect, an entrancing, mystical performance which will sooth and fascinate in equal measures.



MATT CASHMERE & ANTHRACITE



TOP WIDTH: 36"



W1034 x H588 x D277mm



ASH WHITE

FLAT
WALL FIX



HUXTON 51"

TIMBER SUITE | WALL MOUNTED

DELIVER THE VISUAL ILLUSION OF LEVITATION, WITH PRYZM

The wall mounted Pryzm is a contemporary delight to behold. Easy fit wall brackets support your fireplace to deliver the visual illusion of levitation. Underscored with a dramatic floating hearth, the Pryzm takes fireplace design to a whole new level, quite literally.



W1284 x H588 x D277mm



ASH WHITE

FLAT
WALL FIX



VELINO 52"

TIMBER SUITE | FLOORSTANDING

A BREATHTAKING DISPLAY OF VISUAL PERFORMANCE SET WITHIN A CLASSIC STYLE

An outstanding masterpiece with bold, clean lines, the Velino is instantly recognisable and deserves pride of place in your living space as you admire the benefits and features of this timeless composition.



ASH WHITE

W1320 x H1091 x D350mm



ARANA 50"

TIMBER SUITE | FLOORSTANDING

REVOLUTIONARY STYLE INCORPORATING MESMERISING FLAME PERFORMANCE.

Emphasised by the dramatic symphony of flame effects and light illusions displayed across the expanse of the fuel bed, the Arana demands to be admired from every angle of your room. You simply have to see it for yourself.



W1270 x H1021 x D350mm



LAVINA 50"

TIMBER SUITE | FLOORSTANDING

A DESIRABLE, CAPTIVATING FLAME EFFECT WITH COMFORTING HEAT.

The panoramic screen of the floorstanding Lavina stretches across the width of the surround to showcase the 5D flame performance, created with advanced LED technology. Versatility and beauty combine to offer the ultimate centrepiece for your home.



ASH WHITE

W1270 x H851 x D350mm



CASELLI 53"

TIMBER SUITE | FLOORSTANDING

THE COMPACT CASELLI IS MODERN, STYLISH & AESTHETICALLY PLEASING.

The floorstanding Caselli suite provides all the style and functionality of its big brother, the Camino, with the convenience of an even quicker flat to wall installation. The lower stance of the Caselli provides the perfect area to house your television or prized artwork on your wall above. Use Amazon Alexa or Google Assistant to change the colour and brightness of the LED mood lights to your preferred setting.



W1350 x H1150 x D290mm



Note: Plinth is a fixed option only. Also available in Ash White & Chicago Concrete

PRYZM:

ADORN YOUR LIVING SPACE
WITH THE ULTIMATE IN LUXURY.
HAND FINISHED TO PERFECTION.

INTRODUCTION TO MARBLE

Our micro marble Pryzm fireplaces are a statement centrepiece which radiates elegance and sophistication.

Strong, smooth and cool to the touch, the beautiful variegated micro marble surface can only be fully appreciated first hand. Look, feel and admire the authentic finish created by small pieces of real marble which are finely crushed and reconstituted to give an authentic finish, without any natural imperfections.

Bold and dynamic, there is no denying the dramatic visual impact of this distinctive fireplace. Yet this dominant showpiece has the added ability to blend harmoniously with contemporary trends and interiors.



FLOORSTANDING



WALL MOUNTED



WHITE



MANILA



MICRO MARBLE

Easy to clean and equally as easy on the eye, a micro marble fireplace will add that touch of elegance to your home. Durable and luxurious our micro marble is hand finished and polished to perfection to showcase every detail. Appreciate the uniformed natural markings synonymous with this refined and classic material.

FLAT WALL FITTING

This amazing transformation can be fitted in half a day at the very most. With no need for messy building work, a chimney or flue, the Pryzm will fit on any flat wall in your home. Then it's just a case of sitting back and watching the magic.



BUILD QUALITY

It's the attention to detail which adds to the appeal of the Pryzm. Using cutting edge CNC machinery to ensure precision, every micro marble surround is constructed, polished and finished to perfection, by hand, before being branded with the Pryzm stamp of approval.



MADE IN BRITAIN

As a leading British manufacturer, we are incredibly proud of the quality of our products. Every aspect is under our control to ensure that you receive the very best addition to your home. The craftsmanship which we devote to producing fireplaces in our UK workshops is equally matched by ground breaking innovation. It's this balance which makes your Pryzm centrepiece uniquely special.



VERDANT 54" 64"

MICRO MARBLE SUITE | FLOORSTANDING: COMPLETE WITH PLINTH

WITH OUTSTANDING DESIGN CREDENTIALS & EXQUISITE STYLE, COMPLETE WITH ARTEON 3 SIDED ELECTRIC FIRE

Finished in White micro marble with Black Nickel trim details and a full panoramic viewing window, the Verdant offers maximum visibility from all corners of your living space.

The shimmering fuel bed with multi-LED effect has 13 dimmable colour options and rotation setting whilst down lights illuminate the loose logs to offer the ultimate performance and captivate the room. Design your perfect fuel bed effect with the inclusive pebbles, bark, slate & crystals; the finished look will be bespoke to you. Create your perfect ambience with the LED mood lighting that simply works off the same remote control where you have all 13 colours and settings matching the fuel bed.





64" WHITE MICRO MARBLE

54" W1370 x H856 x D196mm

64" W1620 x H856 x D221mm

NEW

1.5kW

MOOD
LED

INSET
WALL FIX



IMPERO 47" 57"

MICRO MARBLE SUITE | WALL MOUNTED

THE ASPIRATIONAL ADDITION TO YOUR HOME THAT YOU HAVE BEEN WAITING FOR.

Introducing the perfectly formed wall mounted Impero in wonderful White micro marble. Cleverly engineered wall brackets effortlessly hold this marble suite to your wall, creating a safe and secure installation. Luxury wall mounted marble at its best.

Available in two sizes to compliment both small or larger sized rooms.



47" W1200 x H619 x D290mm

57" W1450 x H619 x D290mm



47" WHITE MICRO MARBLE

FLAT
WALL FIX



IMPERO 47" 57"

MICRO MARBLE SUITE | FLOORSTANDING: COMPLETE WITH PLINTH

ENTICING WARMTH ENROBED WITH LUXURY,
THE IMPERO HAS IT ALL.

Allow the Impero to enrich your life with the convenience of instant, clean, comforting heat, accompanied by a breath taking visual display which will have you absorbed and fascinated for hours.

Available in two sizes complete with a fixed plinth, perfect for small or large sized rooms.



47" W1200 x H810 x D290mm

57" W1450 x H810 x D290mm



57" WHITE MICRO MARBLE

FLAT
WALL FIX



VISTUS 48"

MICRO MARBLE SUITE | FLOORSTANDING

HARMONIOUS ILLUMINATION ENRICHED IN A TIMELESS SURROUND

Luxurious micro marble anchors the floorstanding Vistus giving it a powerful form. The dazzling 5D flame effect blends harmoniously with gentle illumination which glimmers impressively between tiny pebbles scattered across the expanse of the landscape fuel bed.



MANILA MICRO MARBLE

W1220 x H830 x D400mm



ALESSO 48"

MICRO MARBLE SUITE | FLOORSTANDING

LUXURY, ENTICING WARMTH AND TIMELESS STYLE, A MASTER CLASS IN FIREPLACE DESIGN.

The Alesso in 48" encompasses the dramatic expanse of the portrait Pryzm electric fire and the ultra-real hand painted logs. The Alesso, with its more traditional portrait stance, is expertly hand finished in Manila or White micro marble with an easy clean Anthracite trim.



WHITE MICRO MARBLE

W1220 x H1000 x D400mm



CABRINA 52"

MICRO MARBLE SUITE | FLOORSTANDING

INSPIRING AESTHETICS, ENCOMPASSING WARMTH AND REVOLUTIONARY FLAMES DESIGNED TO AMAZE.

The Cabrina in 52" will add a touch of elegance to your home with its naturally iconic design. Perfectly marrying the portrait Pryzm electric fire, the Cabrina provides the ultimate escapism. Durable and luxurious Manila or White micro marble is hand finished and polished to perfection. This provides an unrivalled smooth to the touch and uniformed natural aesthetic, without any imperfections.



WHITE MICRO MARBLE



W1320 x H1040 x D400mm



MANILA MICRO MARBLE

FLAT
WALL FIX



VOLTA 32" 42"

INSET HOLE IN THE WALL ELECTRIC FIRE

DESIRABLE AESTHETIC WITH MESMERISING VISUAL IMPACT AND SUPER SLIMLINE TRIM.

Designed to fit within a pre-fabricated plasterboard or masonry chimney breast. The innovative design of this panoramic centrepiece comes to life with the patent pending 5D flame effect with three flame colour settings. The simple and effortless installation makes the Volta the perfect choice for a built in chimney breast.

The shimmering fuel bed and ultra-real looking hand painted logs combine for a mesmerising visual impact. This is further enhanced by a multi-LED effect fuel bed with 13 colour options, creating a glowing ember effect. Supplied with a frame fitting kit designed to make installation, faster, simpler & ensure a perfect fit every time. See installation instructions for more info.

Available in a low profile Chrome, Matt Black or Black Nickel trim, the Volta compliments both small and larger sized rooms.



32" (TRIM:W804 x H432) x D238mm

42" (TRIM:W1054 x H432) x D238mm



BLACK NICKEL TRIM



HOLE IN
THE WALL

22" PRYZM FIRE

INSET ELECTRIC FIRE

PERFECTLY COMPLIMENT YOUR STUNNING ELGIN & HALL MARBLE SURROUND

There's no denying the visual impact of the 22" Pryzm inset electric fire. The panoramic glass screen ensures optimum flame performance and the glowing ember effect with miniature pebble fuel bed can be truly appreciated. A 7 day programmable thermostatic remote control adds the convenience of controlled heat.

CHOLLERTON TRIM

The Chollerton trim has a stylish extruded curved profile and is ideal for larger surrounds. Available in a choice of 2 finishes. Ask your retailer how to find your perfect micro marble surround from our Elgin & Hall range. Or view our range at elginandhall.co.uk



BLACK NICKEL



CHROME



CAST STOVE FRONT

Experience the look and feel of a real stove with the Cast Stove Front in Matt Black finish. Fixes directly onto our Pryzm electric fire so you can enjoy controllable flames with a traditional stove appearance.



MATT BLACK



EDGE TRIM

The Edge trim with its minimalistic design aesthetics is an instant icon. Available in a choice of 2 finishes.



BLACK NICKEL



CHROME



16" PRYZM FIRE

INSET ELECTRIC FIRE

THE NEXT GENERATION IN INSET ELECTRIC FIRES

Let the new 16" Pryzm inset electric fires transform your home to a new level of contemporary living. The glorious patent pending 5D flame effect and loose logs create a new level of realism. Enjoy the 2kW heat output at your convenience with the 7 day programmable thermostatic remote control. Select your perfect style from a wide choice of fascia's shown below.

CHOLLERTON TRIM



BLACK NICKEL

CHOLLERTON TRIM COLOURS



CHROME



BLACK NICKEL

EDGE TRIM



CHROME

EDGE TRIM COLOURS



CHROME



BLACK NICKEL

DEVOTION TRIM



CHROME

DEVOTION TRIM COLOURS



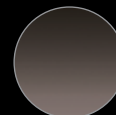
BRASS



CHROME



BRUSHED STEEL



BLACK NICKEL

DEVOTION & BELMONT



BRASS

DEVOTION & BRANTLEY



CHROME

DEVOTION & HAMPDEN



BLACK NICKEL

DEVOTION TRIM COLOUR OPTIONS



BRASS



BLACK NICKEL



CHROME



BRUSHED STEEL

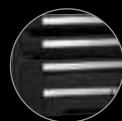
BELMONT FRET OPTIONS



CHROME



BRASS



BLACK / CHROME



BLACK NICKEL

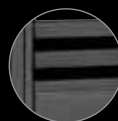
BRANTLEY FRET OPTIONS



CHROME



BRASS



BLACK NICKEL

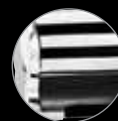
HAMPDEN FRET OPTIONS



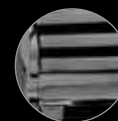
CHROME



BRASS / BLACK



CHROME / BLACK



BLACK NICKEL



TECHNICAL SPECS

ARTEON 3 SIDED GLASS ELECTRIC FIRE

DESCRIPTION	SIZE	ENGINE	HEAT OUTPUT	OPTIONAL MOOD LIGHTING	FUEL BED OPTIONS
ARTEON 1,2 OR 3 SIDED FIRE	SEE PAGES 8-15	1000, 1250 OR 1500 3SL	1.5kW	YES	LOGS, CRYSTALS, PEBBLES, BARK & SLATE

TIMBER SUITES

DESCRIPTION	SIZE	FINISH	ENGINE	HEAT OUTPUT	TOP WIDTH	FLAT WALL FIX	HEARTH / PLINTH
ARANA 50"	W1270 (50") x H1021 x D350mm	A	750P	2kW	50"	YES	FIXED HEARTH
CAMINO 53"	W1350 (53") x H2253/2009 x D290mm	B or D	1000	2kW	48"	YES	OPTIONAL PLINTH
CASELLI 53"	W1350 (53") x H1150 x D290mm	B or D	1000	2kW	48"	YES	FIXED PLINTH
EVENTO 54"	W1370 (54") x H842 x D320mm	A	1000 3SL	1.5KW	50"	YES	FIXED PLINTH
EVENTO 64"	W1620 (64") x H842 x D345mm	A	1250 3SL	1.5KW	60"	YES	FIXED PLINTH
HUXTON 41"	W1034 (41") x H588 x D277mm	A or C	750	2kW	36"	YES	NO
HUXTON 51"	W1284 (51") x H588 x D277mm	A or C	1000	2kW	46"	YES	NO
LAVINA 50"	W1270 (50") x H851 x D350mm	A	750	2kW	50"	YES	FIXED HEARTH
VARDO 47"	B) W1200 (47") x H827/626 x D277mm C) W1200 (47") x H810/609 x D277mm	B or C	750	2kW	42"	YES	OPTIONAL PLINTH
VARDO 53"	B) W1350 (53") x H827/626 x D277mm C) W1350 (53") x H810/609 x D277mm	B or C	750	2kW	48"	YES	OPTIONAL PLINTH
VARDO 57"	B) W1450 (57") x H827/626 x D277mm C) W1450 (57") x H810/609 x D277mm	B or C	1000	2kW	52"	YES	OPTIONAL PLINTH
VELINO 52"	W1320 (52") x H1091 x D350mm	A	750P	2kW	52"	YES	FIXED HEARTH

MICRO MARBLE SUITES

DESCRIPTION	SIZE	FINISH	ENGINE	HEAT OUTPUT	TOP WIDTH	FLAT WALL FIX	HEARTH / PLINTH
ALESSO 48"	W1220 (48") x H1000 x D400mm	E or F	750P	2kW	48"	YES	HEARTH
CABRINA 52"	W1320 (52") x H1040 x D400mm	E or F	750P	2kW	52"	YES	HEARTH
IMPERO 47" (WM)	W1200 (47") x H619 x D290mm	F	750	2kW	42"	YES	NO
IMPERO 57" (WM)	W1450 (57") x H619 x D290mm	F	1000	2kW	52"	YES	NO
IMPERO 47" (FS)	W1200 (47") x H810 x D290mm	F	750	2kW	42"	YES	FIXED PLINTH
IMPERO 57" (FS)	W1450 (57") x H810 x D290mm	F	1000	2kW	52"	YES	FIXED PLINTH
VERDANT 54"	W1370 (54") x H856 x D196mm	F	1000 3SL	1.5kW	50"	NO - INSET	FIXED PLINTH
VERDANT 64"	W1620 (64") x H856 x D221mm	F	1250 3SL	1.5kW	60"	NO - INSET	FIXED PLINTH
VISTUS 48"	W1220 (50") x H830 x D400mm	E or F	750	2kW	48"	YES	HEARTH

2KW INSET ELECTRIC FIRES

MODEL	TRIM	WIDTH	HEIGHT	INSET DEPTH	TRIM FINISH	FRET FINISH
16" PRYZM	CHOLLERTON	512mm	611mm	140mm / 75mm*	CHROME OR BLACK NICKEL	CHROME OR BLACK NICKEL
	EDGE	511mm	611mm	140mm / 75mm*	CHROME OR BLACK NICKEL	CHROME OR BLACK NICKEL
	DEVOTION	510mm	605mm	140mm / 75mm*	BRASS, BRUSHED STEEL, CHROME, BLACK NICKEL	BRASS, BRUSHED STEEL, CHROME, BLACK NICKEL
	DEVOTION & BELMONT	510mm	605mm	140mm / 75mm*	BRASS, BRUSHED STEEL, CHROME, BLACK NICKEL	BRASS, CHROME, BLACK NICKEL, BLACK/CHROME
	DEVOTION & HAMPDEN	510mm	605mm	140mm / 75mm*	BRASS, BRUSHED STEEL, CHROME, BLACK NICKEL	BRASS/BLACK, CHROME, CHROME/BLACK, BLACK NICKEL
	DEVOTION & BRANTLEY	510mm	605mm	140mm / 75mm*	BRASS, CHROME, BLACK NICKEL	BRASS, CHROME, BLACK NICKEL
22" PRYZM	CHOLLERTON	612mm	611mm	140mm / 75mm*	CHROME OR BLACK NICKEL	CHROME OR BLACK NICKEL
	EDGE	611mm	611mm	140mm / 75mm*	CHROME, BLACK NICKEL	CHROME, BLACK NICKEL
	CAST STOVE FRONT	668mm	672mm	140mm	MATT BLACK	MATT BLACK

INSET HOLE IN THE WALL ELECTRIC FIRE

DESCRIPTION	ENGINE	WIDTH	HEIGHT	INSET DEPTH	OPENING REQUIRED		FINISH
					WIDTH	HEIGHT	
VOLTA 32"	750	804mm	432mm	238mm† (min)	792mm	396mm	BLACK NICKEL, MATT BLACK OR CHROME
VOLTA 42"	1000	1054mm	432mm	238mm† (min)	1042mm	396mm	

PAINTED FINISHES

A

ASH WHITE

B

ASH WHITE & VINTAGE OAK GREY

C

MATT CASHMERE & ANTHRACITE

D

ASH WHITE & CHICAGO CONCRETE

Marble Finish E: Manila

E

MANILA

Marble Finish F: White

F

WHITE

FIRE TRIM FINISHES



BLACK NICKEL



CHROME



BRASS



BRUSHED STEEL



MATT BLACK

FRET FINISHES



BLACK NICKEL



CHROME



BRASS



BRUSHED STEEL



CHROME /BLACK



BLACK /CHROME



BRASS /BLACK

† DEPTH DOES NOT INCLUDE WALL THICKNESS



ELGIN & HALL®
BRITISH MADE

COLLECT THE NEW ELGIN & HALL BROCHURES
FROM YOUR LOCAL RETAILER OR DOWNLOAD ONLINE



HEATING HOMES FOR GENERATIONS

bemodern®

FOR MORE INFORMATION ON OUR OTHER
BRANDS, PLEASE CONTACT THEM BELOW.

PRYZM

REVOLUTIONIZING FLAMES

WWW.ELGINANDHALL.CO.UK/COLLECTION/PRYZM

TEL: 0191 430 9434



ELGIN & HALL®

BRITISH MADE

WWW.ELGINANDHALL.CO.UK

TEL: 0191 430 9434



FLARE

collection

WWW.FLARECOLLECTION.COM

TEL: 0191 489 8006



ATLANTABATHROOMS.COM

TEL: 0191 428 0444



www.elginandhall.co.uk



ELGIN & HALL®

Be Modern Ltd | 19/34 Bedesway | Bede Industrial Estate

Jarrow | Tyne and Wear | NE32 3BE

Telephone: 0191 430 9434 | Fax: 0191 580 5005

Email: enquiries@elginandhall.co.uk



MADE IN BRITAIN

Patent Pending

UK Registered Designs

Elgin & Hall hold design copyright and registration of design for its product ranges. Elgin & Hall are continually striving to improve and develop their range of products. It is important, therefore, to check details before ordering as sizes and specifications may change without prior notice. Whilst every effort is made to ensure accuracy and colour, it is not always possible to obtain perfect reproduction because of the materials and printing processes used. © Elgin & Hall October 2021